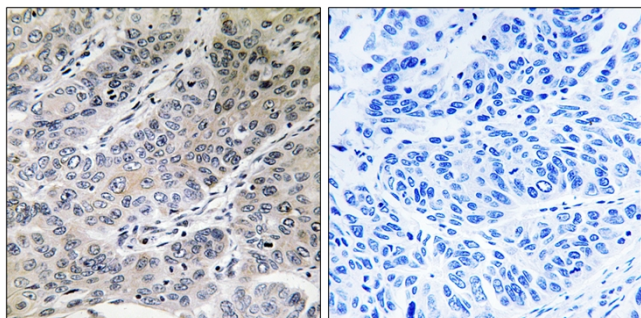




# Brp44 Polyclonal Antibody

|                                  |   |
|----------------------------------|---|
| <b>Catalog No</b>                | YP-Ab-01573   |
| <b>Isotype</b>                   | IgG   |
| <b>Reactivity</b>                | Human;Mouse;Rat   |
| <b>Applications</b>              | IHC;IF;ELISA  |
| <b>Gene Name</b>                 | MPC2  |
| <b>Protein Name</b>              | Mitochondrial pyruvate carrier 2  |
| <b>Immunogen</b>                 | The antiserum was produced against synthesized peptide derived from human BRP44. AA range:31-80                                   |
| <b>Specificity</b>               | Brp44 Polyclonal Antibody detects endogenous levels of Brp44 protein.   |
| <b>Formulation</b>               | Liquid in PBS containing 50% glycerol, 0.5% BSA and 0.02% sodium azide.   |
| <b>Source</b>                    | Polyclonal, Rabbit,IgG  |
| <b>Purification</b>              | The antibody was affinity-purified from rabbit antiserum by affinity-chromatography using epitope-specific immunogen.             |
| <b>Dilution</b>                  | IHC: 1/100 - 1/300. ELISA: 1/40000.. IF 1:50-200  |
| <b>Concentration</b>             | 1 mg/ml   |
| <b>Purity</b>                    | ≥90%  |
| <b>Storage Stability</b>         | -20°C/1 year  |
| <b>Synonyms</b>                  | MPC2; BRP44; Mitochondrial pyruvate carrier 2; Brain protein 44   |
| <b>Observed Band</b>             |   |
| <b>Cell Pathway</b>              | Mitochondrion inner membrane ; Multi-pass membrane protein .  |
| <b>Tissue Specificity</b>        | Brain,Thalamus,   |
| <b>Function</b>                  | similarity:Belongs to the UPF0041 (0-44) family.,   |
| <b>Background</b>                | similarity:Belongs to the UPF0041 (0-44) family.,   |
| <b>matters needing attention</b> | Avoid repeated freezing and thawing!  |
| <b>Usage suggestions</b>         | This product can be used in immunological reaction related experiments. For more information, please consult technical personnel. |

## Products Images



Immunohistochemistry analysis of paraffin-embedded human lung carcinoma tissue, using BRP44 Antibody. The picture on the right is blocked with the synthesized peptide.