

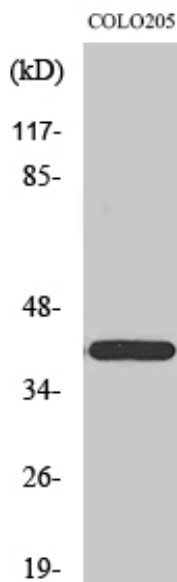


# Brp16 Polyclonal Antibody

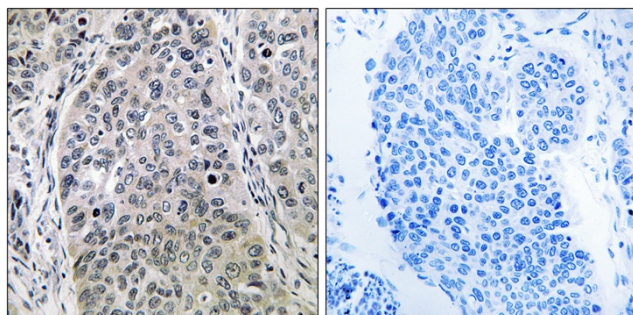
<b>Catalog No</b>	YP-Ab-01572
<b>Isotype</b>	IgG
<b>Reactivity</b>	Human;Mouse;Rat
<b>Applications</b>	WB;IHC;IF;ELISA
<b>Gene Name</b>	FAM203A
<b>Protein Name</b>	Protein FAM203A
<b>Immunogen</b>	The antiserum was produced against synthesized peptide derived from human BRP16. AA range:251-300
<b>Specificity</b>	Brp16 Polyclonal Antibody detects endogenous levels of Brp16 protein.
<b>Formulation</b>	Liquid in PBS containing 50% glycerol, 0.5% BSA and 0.02% sodium azide.
<b>Source</b>	Polyclonal, Rabbit,IgG
<b>Purification</b>	The antibody was affinity-purified from rabbit antiserum by affinity-chromatography using epitope-specific immunogen.
<b>Dilution</b>	WB: 1/500 - 1/2000. IHC: 1/100 - 1/300. ELISA: 1/40000.. IF 1:50-200
<b>Concentration</b>	1 mg/ml
<b>Purity</b>	≥90%
<b>Storage Stability</b>	-20°C/1 year
<b>Synonyms</b>	FAM203A; BRP16; C8orf30A; Protein FAM203A; Brain protein 16
<b>Observed Band</b>	40kD
<b>Cell Pathway</b>	
<b>Tissue Specificity</b>	Colon,Lung,Umbilical cord blood,
<b>Function</b>	similarity:Belongs to the UPF0570 (BRP16/HGH1) family.,
<b>Background</b>	similarity:Belongs to the UPF0570 (BRP16/HGH1) family.,
<b>matters needing attention</b>	Avoid repeated freezing and thawing!
<b>Usage suggestions</b>	This product can be used in immunological reaction related experiments. For more information, please consult technical personnel.



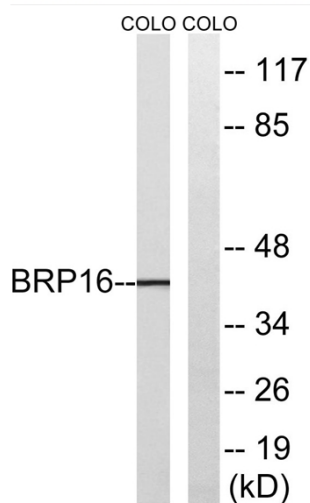
## Products Images



Western Blot analysis of various cells using Brp16 Polyclonal Antibody



Immunohistochemistry analysis of paraffin-embedded human lung carcinoma tissue, using BRP16 Antibody. The picture on the right is blocked with the synthesized peptide.



Western blot analysis of lysates from COLO cells, using BRP16 Antibody. The lane on the right is blocked with the synthesized peptide.