



# BACH1 Polyclonal Antibody

<b>Catalog No</b>	YP-Ab-01560
<b>Isotype</b>	IgG
<b>Reactivity</b>	Human;Rat;Mouse;
<b>Applications</b>	WB;IHC;IF;ELISA
<b>Gene Name</b>	BACH1
<b>Protein Name</b>	Transcription regulator protein BACH1
<b>Immunogen</b>	The antiserum was produced against synthesized peptide derived from human BACH1. AA range:131-180
<b>Specificity</b>	BACH1 Polyclonal Antibody detects endogenous levels of BACH1 protein.
<b>Formulation</b>	Liquid in PBS containing 50% glycerol, 0.5% BSA and 0.02% sodium azide.
<b>Source</b>	Polyclonal, Rabbit,IgG
<b>Purification</b>	The antibody was affinity-purified from rabbit antiserum by affinity-chromatography using epitope-specific immunogen.
<b>Dilution</b>	Western Blot: 1/500 - 1/2000. Immunohistochemistry: 1/100 - 1/300. Immunofluorescence: 1/200 - 1/1000. ELISA: 1/20000. Not yet tested in other applications.
<b>Concentration</b>	1 mg/ml
<b>Purity</b>	≥90%
<b>Storage Stability</b>	-20°C/1 year
<b>Synonyms</b>	BACH1; Transcription regulator protein BACH1; BTB and CNC homolog 1; HA2303
<b>Observed Band</b>	100kD
<b>Cell Pathway</b>	Nucleus .
<b>Tissue Specificity</b>	Epithelium,Placenta,Trachea,
<b>Function</b>	function:Transcriptional regulator that acts as repressor or activator. Binds, in-vitro, to NF-E2 binding sites. Play important roles in coordinating transcription activation and repression by MAFK.,similarity:Belongs to the bZIP family.,similarity:Belongs to the bZIP family. CNC subfamily.,similarity:Contains 1 BTB (POZ) domain.,similarity:Contains 1 bZIP domain.,
<b>Background</b>	This gene encodes a transcription factor that belongs to the cap&apos;n&apos;collar type of basic region leucine zipper factor family (CNC-bZip). The encoded protein contains broad complex, tramtrack, bric-a-brac/poxvirus and zinc finger (BTB/POZ) domains, which is atypical of CNC-bZip family members. These BTB/POZ domains facilitate protein-protein interactions and formation of homo- and/or hetero-oligomers. When this encoded protein forms a heterodimer with MafK, it functions as a repressor of Maf



recognition element (MARE) and transcription is repressed. Multiple alternatively spliced transcript variants have been identified for this gene. [provided by RefSeq, May 2009],

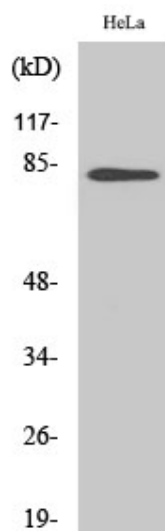
**matters needing attention**

Avoid repeated freezing and thawing!

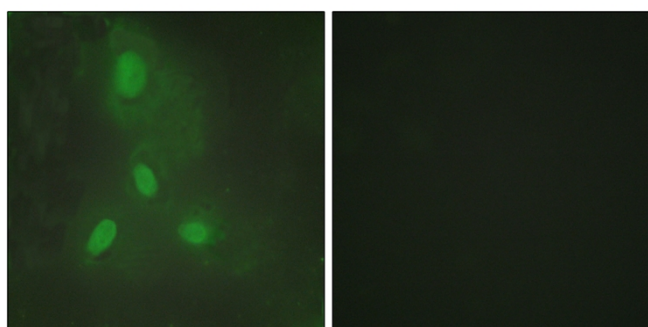
**Usage suggestions**

This product can be used in immunological reaction related experiments. For more information, please consult technical personnel.

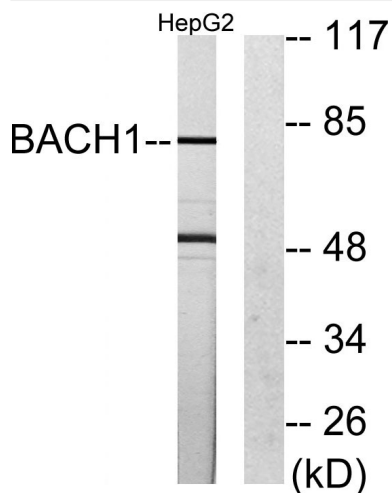
**Products Images**



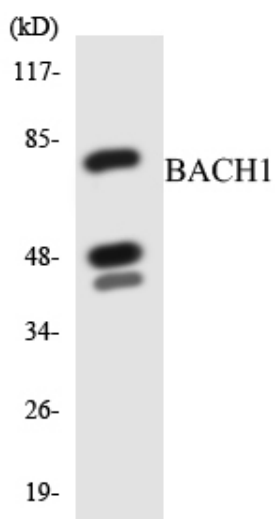
Western Blot analysis of various cells using BACH1 Polyclonal Antibody



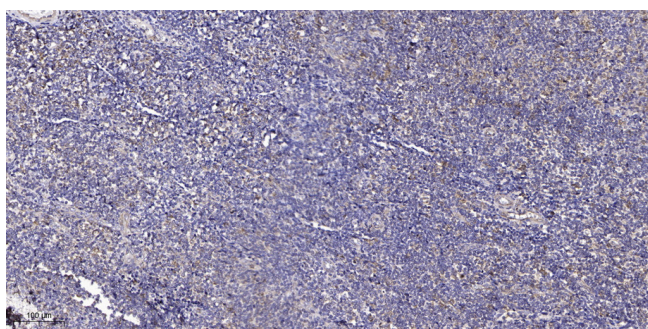
Immunofluorescence analysis of HeLa cells, using BACH1 Antibody. The picture on the right is blocked with the synthesized peptide.



Western blot analysis of lysates from HepG2 cells, using BACH1 Antibody. The lane on the right is blocked with the synthesized peptide.



Western blot analysis of the lysates from HeLa cells using BACH1 antibody.



Immunohistochemical analysis of paraffin-embedded human tonsil. 1, Antibody was diluted at 1:200(4° overnight). 2, Tris-EDTA,pH9.0 was used for antigen retrieval. 3,Secondary antibody was diluted at 1:200(room temperature, 45min).