



AW-1 Polyclonal Antibody

Catalog No	YP-Ab-01559
Isotype	IgG
Reactivity	Human;Rat;Mouse;
Applications	WB;IHC;IF;ELISA
Gene Name	ZNF174
Protein Name	Zinc finger protein 174
Immunogen	The antiserum was produced against synthesized peptide derived from human ZNF174. AA range:201-250
Specificity	AW-1 Polyclonal Antibody detects endogenous levels of AW-1 protein.
Formulation	Liquid in PBS containing 50% glycerol, 0.5% BSA and 0.02% sodium azide.
Source	Polyclonal, Rabbit,IgG
Purification	The antibody was affinity-purified from rabbit antiserum by affinity-chromatography using epitope-specific immunogen.
Dilution	Western Blot: 1/500 - 1/2000. Immunohistochemistry: 1/100 - 1/300. Immunofluorescence: 1/200 - 1/1000. ELISA: 1/10000. Not yet tested in other applications.
Concentration	1 mg/ml
Purity	≥90%
Storage Stability	-20°C/1 year
Synonyms	ZNF174; ZSCAN8; Zinc finger protein 174; AW-1; Zinc finger and SCAN domain-containing protein 8
Observed Band	46kD
Cell Pathway	Nucleus.
Tissue Specificity	Expressed in a variety of organs, but most strongly in adult testis and ovary followed by small intestine, colon, prostate, thymus, spleen, pancreas, skeletal muscle, heart, brain and kidney. Also expressed in umbilical vein endothelial cells, foreskin fibroblast and Hep-G2 cells.
Function	function:Transcriptional repressor.,similarity:Belongs to the krueppel C2H2-type zinc-finger protein family.,similarity:Contains 1 SCAN box domain.,similarity:Contains 3 C2H2-type zinc fingers.,subunit:Homodimer.,tissue specificity:Expressed in a variety of organs, but most strongly in adult testis and ovary followed by small intestine, colon, prostate, thymus, spleen, pancreas, skeletal muscle, heart, brain and kidney. Also expressed in umbilical vein endothelial cells, foreskin fibroblast and HEPG2 cells.,
Background	function:Transcriptional repressor.,similarity:Belongs to the krueppel C2H2-type zinc-finger protein family.,similarity:Contains 1 SCAN box domain.,similarity:Contains 3 C2H2-type zinc fingers.,subunit:Homodimer.,tissue



specificity: Expressed in a variety of organs, but most strongly in adult testis and ovary followed by small intestine, colon, prostate, thymus, spleen, pancreas, skeletal muscle, heart, brain and kidney. Also expressed in umbilical vein endothelial cells, foreskin fibroblast and HEPG2 cells.,

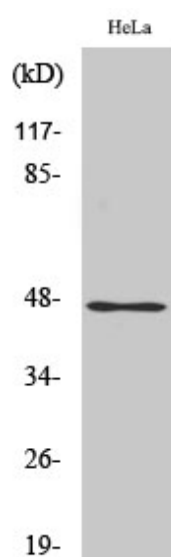
matters needing attention

Avoid repeated freezing and thawing!

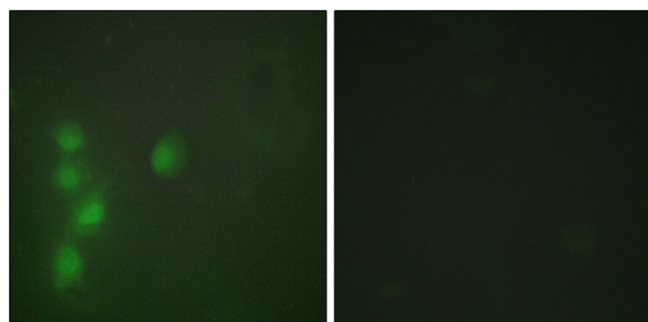
Usage suggestions

This product can be used in immunological reaction related experiments. For more information, please consult technical personnel.

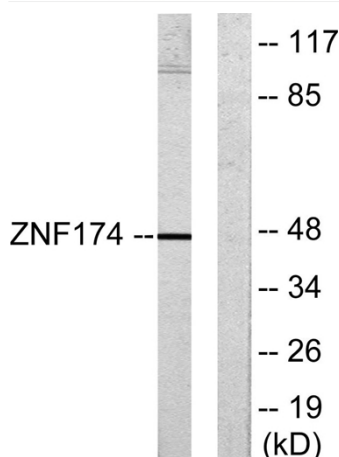
Products Images



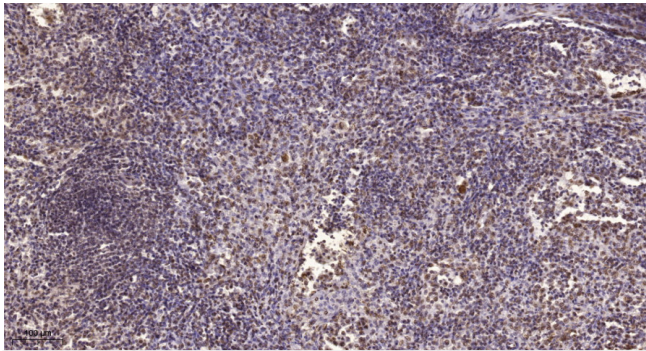
Western Blot analysis of various cells using AW-1 Polyclonal Antibody



Immunofluorescence analysis of HUVEC cells, using ZNF174 Antibody. The picture on the right is blocked with the synthesized peptide.



Western blot analysis of lysates from HeLa cells, using ZNF174 Antibody. The lane on the right is blocked with the synthesized peptide.



Immunohistochemical analysis of paraffin-embedded human spleen. 1, Tris-EDTA, pH 9.0 was used for antigen retrieval. 2 Antibody was diluted at 1:200 (4° overnight). 3, Secondary antibody was diluted at 1:200 (room temperature, 45 min).