



CALHM1 Polyclonal Antibody

Catalog No	YP-Ab-01215
Isotype	IgG
Reactivity	Human;Rat
Applications	WB;IHC;IF
Gene Name	CALHM1
Protein Name	Calcium homeostasis modulator protein 1
Immunogen	Synthetic Peptide of CALHM1 AA range: 204-254
Specificity	The antibody detects endogenous CALHM1 protein.
Formulation	PBS, pH 7.4, containing 0.5%BSA, 0.02% sodium azide as Preservative and 50% Glycerol.
Source	Polyclonal, Rabbit,IgG
Purification	The antibody was affinity-purified from rabbit antiserum by affinity-chromatography using epitope-specific immunogen.
Dilution	WB: 1:500-1000 IHC: 1:200-500. IF 1:50-200
Concentration	1 mg/ml
Purity	≥90%
Storage Stability	-20°C/1 year
Synonyms	Calcium homeostasis modulator protein 1; Protein FAM26C
Observed Band	40kD
Cell Pathway	Cell membrane; Multi-pass membrane protein . Endoplasmic reticulum membrane ; Multi-pass membrane protein. Basolateral cell membrane; Multi-pass membrane protein . Colocalizes with HSPA5 at the endoplasmic reticulum (PubMed:18585350). Localizes to the basolateral membrane of epithelial cells including taste cells (By similarity). .
Tissue Specificity	Predominantly expressed in adult brain. Detected also in retinoic acid-differentiated SH-SY5Y cells. Specifically expressed in circumvallate taste bud cells.
Function	function:May be a pore-forming ion channel. Controls cytosolic Ca(2+) permeability and cytosolic Ca(2+) concentration. Controls amyloid precursor protein (APP) proteolysis and aggregated amyloid-beta (Abeta) peptides levels in a Ca(2+) dependent manner.,polymorphism:Leu-86 causes a dysregulation of Ca(2+) homeostasis and amyloid precursor protein (APP) metabolism, and may be a risk factor for the development of Alzheimer's disease.,similarity:Belongs to the FAM26 family.,subcellular location:Colocalizes with HSPA5 at the endoplasmic reticulum.,subunit:Homooligomer; homomultimerized to form dimeric and possibly tetrameric structures.,tissue specificity:Predominantly expressed in adult brain. Detected also in retinoic acid-differentiated SH-SY5Y cells.,



Background

calcium homeostasis modulator 1(CALHM1) Homo sapiens This gene encodes a calcium channel that plays a role in processing of amyloid-beta precursor protein. A polymorphism at this locus has been reported to be associated with susceptibility to late-onset Alzheimer's disease in some populations, but the pathogenicity of this polymorphism is unclear.[provided by RefSeq, Mar 2010],

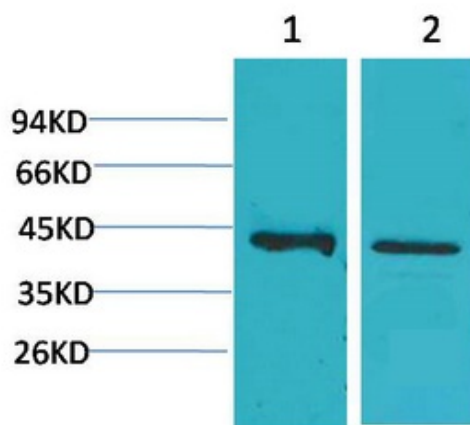
matters needing attention

Avoid repeated freezing and thawing!

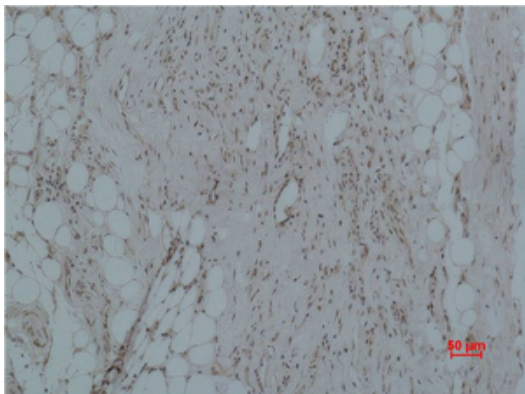
Usage suggestions

This product can be used in immunological reaction related experiments. For more information, please consult technical personnel.

Products Images



Western blot analysis of 1) Human Brain Tissue, 2) Rat Brain Tissue using CALHM1 Polyclonal Antibody. Secondary antibody(catalog#:RS0002) was diluted at 1:20000



Immunohistochemical analysis of paraffin-embedded Human Hepatocarcinoma using CALHM1 Polyclonal Antibody.