

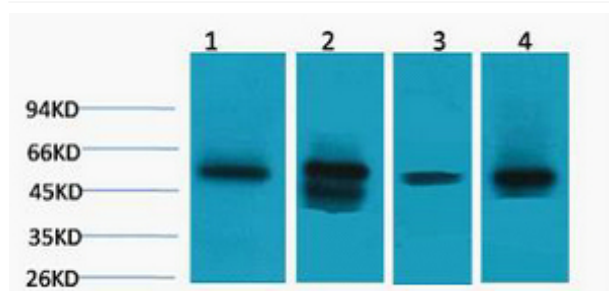


# LDHD Polyclonal Antibody

<b>Catalog No</b>	YP-Ab-01196
<b>Isotype</b>	IgG
<b>Reactivity</b>	Human;Mouse;Rat
<b>Applications</b>	WB
<b>Gene Name</b>	LDHD
<b>Protein Name</b>	Probable D-lactate dehydrogenase, mitochondrial
<b>Immunogen</b>	Recombinant Protein of LDHD
<b>Specificity</b>	The antibody detects endogenous LDHD protein.
<b>Formulation</b>	PBS, pH 7.4, containing 0.5%BSA, 0.02% sodium azide as Preservative and 50% Glycerol.
<b>Source</b>	Polyclonal, Rabbit,IgG
<b>Purification</b>	The antibody was affinity-purified from rabbit antiserum by affinity-chromatography using epitope-specific immunogen.
<b>Dilution</b>	WB: 1:1000-5000
<b>Concentration</b>	1 mg/ml
<b>Purity</b>	≥90%
<b>Storage Stability</b>	-20°C/1 year
<b>Synonyms</b>	Probable D-lactate dehydrogenase, mitochondrial (DLD) (Lactate dehydrogenase D) (EC 1.1.2.4)
<b>Observed Band</b>	55kD
<b>Cell Pathway</b>	Mitochondrion .
<b>Tissue Specificity</b>	Expressed moderately in heart and liver and at lower levels in skeletal muscle and kidney.
<b>Function</b>	catalytic activity:(R)-lactate + 2 ferricytochrome c = pyruvate + 2 ferrocytochrome c.,cofactor:FAD.,similarity:Belongs to the FAD-binding oxidoreductase/transferase type 4 family.,similarity:Contains 1 FAD-binding PCMH-type domain.,subunit:Interacts with CSRP3.,tissue specificity:Expressed moderately in heart and liver and at lower levels in skeletal muscle and kidney.,
<b>Background</b>	The protein encoded by this gene belongs to the D-isomer specific 2-hydroxyacid dehydrogenase family. The similar protein in yeast has both D-lactate and D-glycerate dehydrogenase activities. Alternative splicing occurs at this locus and two transcript variants encoding distinct isoforms have been identified. [provided by RefSeq, Jul 2008],
<b>matters needing attention</b>	Avoid repeated freezing and thawing!

**Usage suggestions**

This product can be used in immunological reaction related experiments. For more information, please consult technical personnel.

**Products Images**

Western blot analysis of 1) Hela, 2) Mouse Skeletal Muscle, 3) Mouse Liver, 4) Rat Kidney, diluted at 1:5000. Secondary antibody(catalog#:RS0002) was diluted at 1:20000