



VAMP-4 Polyclonal Antibody

Catalog No	YP-Ab-00754
Isotype	IgG
Reactivity	Human;Mouse
Applications	IF;ELISA
Gene Name	VAMP4
Protein Name	Vesicle-associated membrane protein 4
Immunogen	The antiserum was produced against synthesized peptide derived from human VAMP4. AA range:1-50
Specificity	VAMP-4 Polyclonal Antibody detects endogenous levels of VAMP-4 protein.
Formulation	Liquid in PBS containing 50% glycerol, 0.5% BSA and 0.02% sodium azide.
Source	Polyclonal, Rabbit,IgG
Purification	The antibody was affinity-purified from rabbit antiserum by affinity-chromatography using epitope-specific immunogen.
Dilution	Immunofluorescence: 1/200 - 1/1000. ELISA: 1/10000. Not yet tested in other applications.
Concentration	1 mg/ml
Purity	≥90%
Storage Stability	-20°C/1 year
Synonyms	VAMP4; Vesicle-associated membrane protein 4; VAMP-4
Observed Band	
Cell Pathway	Golgi apparatus, trans-Golgi network membrane ; Single-pass type IV membrane protein . Associated with trans Golgi network (TGN) and newly formed immature secretory granules (ISG). Not found on the mature secretory organelles.
Tissue Specificity	B-cell,Bone marrow,Epithelium,Liver,Urinary bladder,
Function	function:Involved in the pathway that functions to remove an inhibitor (probably synaptotagmin-4) of calcium-triggered exocytosis during the maturation of secretory granules. May be a marker for this sorting pathway that is critical for remodeling the secretory response of granule.,similarity:Belongs to the synaptobrevin family.,similarity:Contains 1 v-SNARE coiled-coil homology domain.,subcellular location:Associated with trans Golgi network (TGN) and newly formed immature secretory granules (ISG). Not found on the mature secretory organelles.,subunit:Identified in a complex containing STX6, STX13, VAMP4 and VTI1A.,
Background	Synaptobrevins/VAMPs, syntaxins, and the 25-kD synaptosomal-associated protein SNAP25 are the main components of a protein complex involved in the docking and/or fusion of synaptic vesicles with the presynaptic membrane. The protein encoded by this gene is a member of the vesicle-associated membrane

protein (VAMP)/synaptobrevin family. This protein may play a role in trans-Golgi network-to-endosome transport. [provided by RefSeq, Jul 2008],

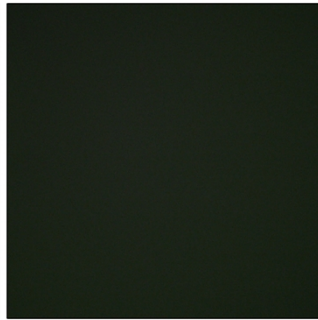
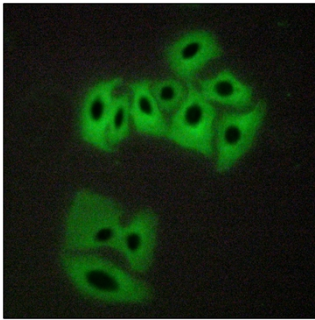
matters needing attention

Avoid repeated freezing and thawing!

Usage suggestions

This product can be used in immunological reaction related experiments. For more information, please consult technical personnel.

Products Images



Immunofluorescence analysis of A549 cells, using VAMP4 Antibody. The picture on the right is blocked with the synthesized peptide.