



# SCAMP1 Polyclonal Antibody

<b>Catalog No</b>	YP-Ab-00720
<b>Isotype</b>	IgG
<b>Reactivity</b>	Human;Mouse;Rat
<b>Applications</b>	WB;IHC
<b>Gene Name</b>	SCAMP1
<b>Protein Name</b>	Secretory carrier-associated membrane protein 1
<b>Immunogen</b>	The antiserum was produced against synthesized peptide derived from human SCAMP1. AA range:273-322
<b>Specificity</b>	SCAMP1 Polyclonal Antibody detects endogenous levels of SCAMP1 protein.
<b>Formulation</b>	Liquid in PBS containing 50% glycerol, 0.5% BSA and 0.02% sodium azide.
<b>Source</b>	Polyclonal, Rabbit,IgG
<b>Purification</b>	The antibody was affinity-purified from rabbit antiserum by affinity-chromatography using epitope-specific immunogen.
<b>Dilution</b>	WB 1:500-2000;IHC-p 1:50-300
<b>Concentration</b>	1 mg/ml
<b>Purity</b>	≥90%
<b>Storage Stability</b>	-20°C/1 year
<b>Synonyms</b>	SCAMP1; SCAMP; Secretory carrier-associated membrane protein 1; Secretory carrier membrane protein 1
<b>Observed Band</b>	32kD
<b>Cell Pathway</b>	Golgi apparatus, trans-Golgi network membrane ; Multi-pass membrane protein . Recycling endosome membrane ; Multi-pass membrane protein .
<b>Tissue Specificity</b>	Widely expressed, with highest expression in brain.
<b>Function</b>	function:Functions in post-Golgi recycling pathways. Acts as a recycling carrier to the cell surface.,similarity:Belongs to the SCAMP family.,subunit:Interacts with AP1GBP1 and ITSN1 (By similarity). Interacts with SLC9A7.,tissue specificity:Widely expressed, with highest expression in brain.,
<b>Background</b>	This gene product belongs to the SCAMP family of proteins, which are secretory carrier membrane proteins. They function as carriers to the cell surface in post-golgi recycling pathways. Different family members are highly related products of distinct genes, and are usually expressed together. These findings suggest that these protein family members may function at the same site during vesicular transport rather than in separate pathways. A pseudogene of this gene has been defined on chromosome 1. Alternative splicing results in multiple transcript variants. [provided by RefSeq, Mar 2014],



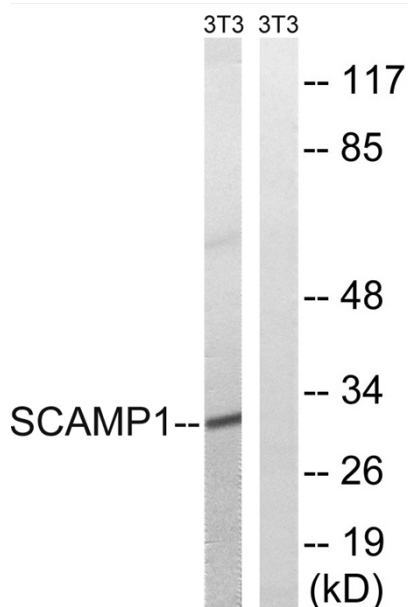
### matters needing attention

Avoid repeated freezing and thawing!

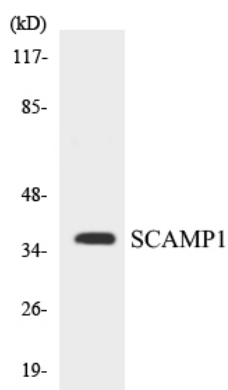
### Usage suggestions

This product can be used in immunological reaction related experiments. For more information, please consult technical personnel.

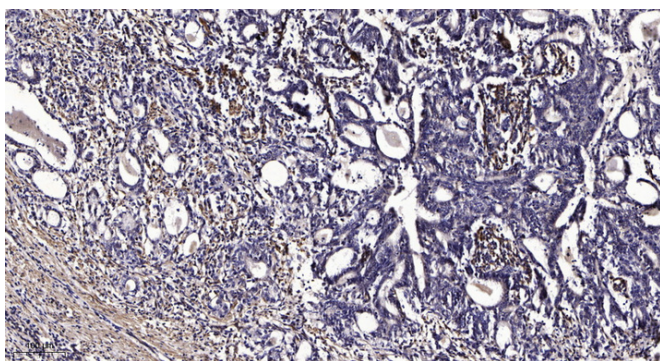
## Products Images



Western blot analysis of lysates from NIH/3T3 cells, using SCAMP1 Antibody. The lane on the right is blocked with the synthesized peptide.



Western blot analysis of the lysates from HeLa cells using SCAMP1 antibody.



Immunohistochemical analysis of paraffin-embedded human Gastric adenocarcinoma. 1, Antibody was diluted at 1:200(4° overnight). 2, Tris-EDTA,pH9.0 was used for antigen retrieval. 3,Secondary antibody was diluted at 1:200(room temperature, 45min).