

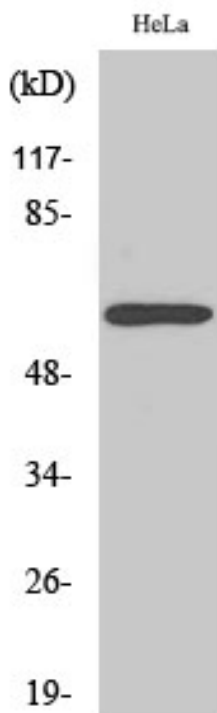


Rabaptin-5 β Polyclonal Antibody

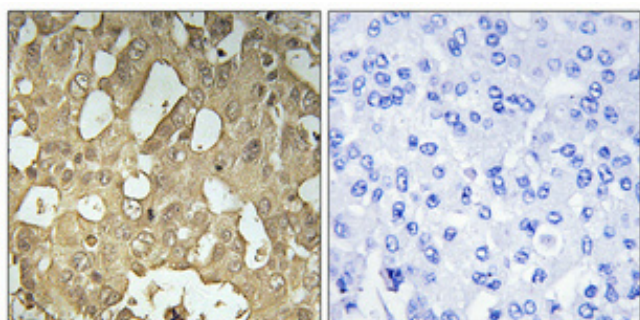
Catalog No	YP-Ab-00717
Isotype	IgG
Reactivity	Human;Mouse;Rat
Applications	WB;IHC;IF;ELISA
Gene Name	RABEP2
Protein Name	Rab GTPase-binding effector protein 2
Immunogen	The antiserum was produced against synthesized peptide derived from human RABEP2. AA range:353-402
Specificity	Rabaptin-5 β Polyclonal Antibody detects endogenous levels of Rabaptin-5 β protein.
Formulation	Liquid in PBS containing 50% glycerol, 0.5% BSA and 0.02% sodium azide.
Source	Polyclonal, Rabbit,IgG
Purification	The antibody was affinity-purified from rabbit antiserum by affinity-chromatography using epitope-specific immunogen.
Dilution	WB: 1/500 - 1/2000. IHC: 1/100 - 1/300. ELISA: 1/10000.. IF 1:50-200
Concentration	1 mg/ml
Purity	$\geq 90\%$
Storage Stability	-20°C/1 year
Synonyms	RABEP2; RABPT5B; Rab GTPase-binding effector protein 2; Rabaptin-5beta
Observed Band	64kD
Cell Pathway	Cytoplasm . Early endosome . Cytoplasm, cytoskeleton, microtubule organizing center, centrosome . Cytoplasm, cytoskeleton, cilium basal body .
Tissue Specificity	Hepatoma,Mammary gland,Testis,
Function	function:Plays a role in membrane trafficking and in homotypic early endosome fusion.,similarity:Belongs to the rabaptin family.,subunit:Heterodimer with RABGEF1. The dimer binds RAB5A that has been activated by GTP-binding.,
Background	function:Plays a role in membrane trafficking and in homotypic early endosome fusion.,similarity:Belongs to the rabaptin family.,subunit:Heterodimer with RABGEF1. The dimer binds RAB5A that has been activated by GTP-binding.,
matters needing attention	Avoid repeated freezing and thawing!
Usage suggestions	This product can be used in immunological reaction related experiments. For more information, please consult technical personnel.



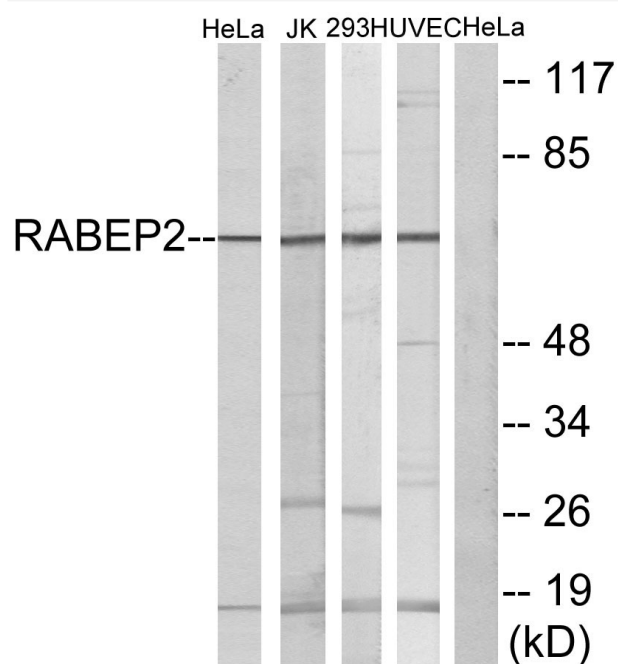
Products Images



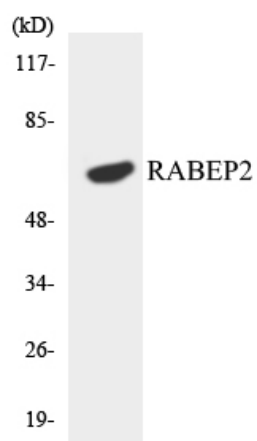
Western Blot analysis of various cells using Rabaptin-5
β Polyclonal Antibody



Immunohistochemical analysis of paraffin-embedded Human breast cancer. Antibody was diluted at 1:100(4° overnight). High-pressure and temperature Tris-EDTA,pH8.0 was used for antigen retrieval. Negative contrl (right) obtained from antibody was pre-absorbed by immunogen peptide.



Western blot analysis of lysates from HeLa, Jurkat, 293, and HUVEC cells, using RABEP2 Antibody. The lane on the right is blocked with the synthesized peptide.



Western blot analysis of the lysates from HeLa cells using RABEP2 antibody.