



Rabaptin-5α Polyclonal Antibody

Catalog No	YP-Ab-00716
Isotype	IgG
Reactivity	Human;Mouse;Rat
Applications	IHC;IF;ELISA
Gene Name	RABEP1
Protein Name	Rab GTPase-binding effector protein 1
Immunogen	The antiserum was produced against synthesized peptide derived from human RABEP1. AA range:549-598
Specificity	Rabaptin-5α Polyclonal Antibody detects endogenous levels of Rabaptin-5α protein.
Formulation	Liquid in PBS containing 50% glycerol, 0.5% BSA and 0.02% sodium azide.
Source	Polyclonal, Rabbit,IgG
Purification	The antibody was affinity-purified from rabbit antiserum by affinity-chromatography using epitope-specific immunogen.
Dilution	IHC: 1/100 - 1/300. ELISA: 1/40000.. IF 1:50-200
Concentration	1 mg/ml
Purity	≥90%
Storage Stability	-20°C/1 year
Synonyms	RABEP1; RAB5EP; RABPT5; RABPT5A; Rab GTPase-binding effector protein 1; Rabaptin-4; Rabaptin-5; Rabaptin-5alpha; Renal carcinoma antigen NY-REN-17
Observed Band	
Cell Pathway	Cytoplasm. Early endosome. Recycling endosome. Cytoplasmic vesicle.
Tissue Specificity	Cervix carcinoma,Epithelium,Fetal brain cortex,Kidney,Plate
Function	function:Rab effector protein acting as linker between gamma-adaptin, RAB4A and RAB5A. Involved in endocytic membrane fusion and membrane trafficking of recycling endosomes. Stimulates RABGEF1 mediated nucleotide exchange on RAB5A.,PTM:Proteolytic cleavage by caspases in apoptotic cells causes loss of endosome fusion activity.,similarity:Belongs to the rabaptin family.,subunit:Heterodimer with RABGEF1. The heterodimer binds RAB4A and RAB5A that have been activated by GTP-binding. Binds TSC2, GGA1, GGA2, GGA3, AP1G1 and AP1G2.,
Background	function:Rab effector protein acting as linker between gamma-adaptin, RAB4A and RAB5A. Involved in endocytic membrane fusion and membrane trafficking of recycling endosomes. Stimulates RABGEF1 mediated nucleotide exchange on RAB5A.,PTM:Proteolytic cleavage by caspases in apoptotic cells causes loss of endosome fusion activity.,similarity:Belongs to the rabaptin



family.,subunit:Heterodimer with RABGEF1. The heterodimer binds RAB4A and RAB5A that have been activated by GTP-binding. Binds TSC2, GGA1, GGA2, GGA3, AP1G1 and AP1G2.,

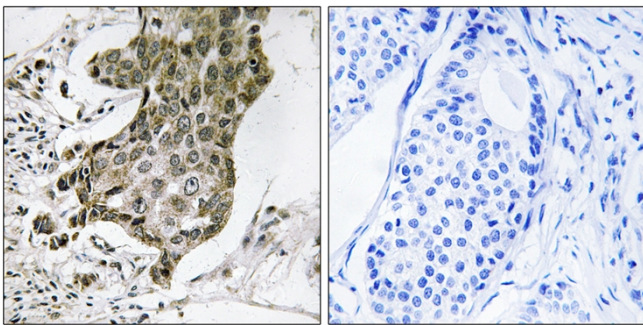
matters needing attention

Avoid repeated freezing and thawing!

Usage suggestions

This product can be used in immunological reaction related experiments. For more information, please consult technical personnel.

Products Images



Immunohistochemistry analysis of paraffin-embedded human breast carcinoma tissue, using RABEP1 Antibody. The picture on the right is blocked with the synthesized peptide.