



PNPase Polyclonal Antibody

Catalog No	YP-Ab-00714
Isotype	IgG
Reactivity	Human;Mouse
Applications	WB;IHC;IF;ELISA
Gene Name	PNPT1
Protein Name	Polyribonucleotide nucleotidyltransferase 1 mitochondrial
Immunogen	The antiserum was produced against synthesized peptide derived from human PNPT1. AA range:570-619
Specificity	PNPase Polyclonal Antibody detects endogenous levels of PNPase protein.
Formulation	Liquid in PBS containing 50% glycerol, 0.5% BSA and 0.02% sodium azide.
Source	Polyclonal, Rabbit,IgG
Purification	The antibody was affinity-purified from rabbit antiserum by affinity-chromatography using epitope-specific immunogen.
Dilution	WB: 1/500 - 1/2000. IHC: 1/100 - 1/300. ELISA: 1/20000.. IF 1:50-200
Concentration	1 mg/ml
Purity	≥90%
Storage Stability	-20°C/1 year
Synonyms	PNPT1; PNPASE; Polyribonucleotide nucleotidyltransferase 1; mitochondrial; 3'-5' RNA exonuclease OLD35; PNPase old-35; Polynucleotide phosphorylase 1; PNPase 1; Polynucleotide phosphorylase-like protein
Observed Band	85kD
Cell Pathway	Cytoplasm . Mitochondrion matrix . Mitochondrion intermembrane space ; Peripheral membrane protein .
Tissue Specificity	Cervix,Epithelium,Melanoma,Skin,Teratocarcinoma,Urinary bla
Function	catalytic activity:RNA(n+1) + phosphate = RNA(n) + a nucleoside diphosphate.,function:Involved in mRNA degradation. Hydrolyzes single-stranded polyribonucleotides processively in the 3'- to 5'-direction.,induction:Up-regulated in cells upon senescence and terminal differentiation. Up-regulated after treatment with interferon beta (IFN-beta).,PTM:Phosphorylated upon DNA damage, probably by ATM or ATR.,similarity:Belongs to the polyribonucleotide nucleotidyltransferase family.,similarity:Contains 1 KH domain.,similarity:Contains 1 S1 motif domain.,subunit:Homotrimer (Potential). Interacts with TCL1A; the interaction has no effect on PNPT1 exonuclease activity.,
Background	The protein encoded by this gene belongs to the evolutionary conserved polynucleotide phosphorylase family comprised of phosphate dependent 3'→5' exoribonucleases implicated in RNA processing and



degradation. This enzyme is predominantly localized in the mitochondrial intermembrane space and is involved in import of RNA to mitochondria. Mutations in this gene have been associated with combined oxidative phosphorylation deficiency-13 and autosomal recessive nonsyndromic deafness-70. Related pseudogenes are found on chromosomes 3 and 7. [provided by RefSeq, Dec 2012],

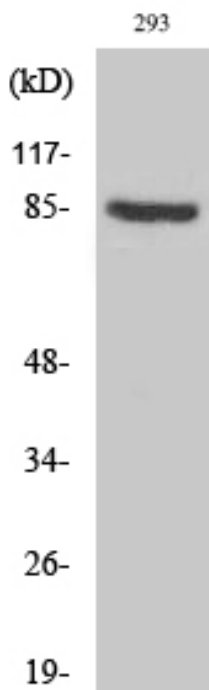
matters needing attention

Avoid repeated freezing and thawing!

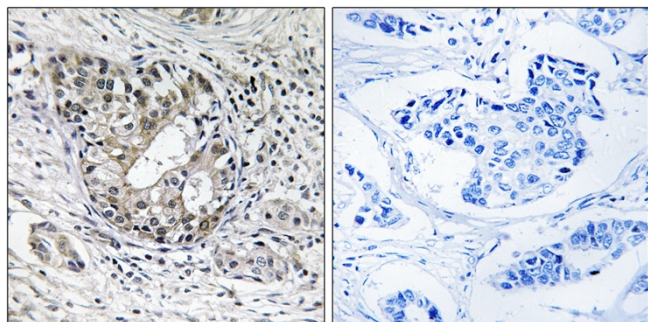
Usage suggestions

This product can be used in immunological reaction related experiments. For more information, please consult technical personnel.

Products Images



Western Blot analysis of various cells using PNPase Polyclonal Antibody diluted at 1:1000



Immunohistochemistry analysis of paraffin-embedded human breast carcinoma tissue, using PNPase Polyclonal Antibody. The picture on the right is blocked with the synthesized peptide.