



# p115 Polyclonal Antibody

<b>Catalog No</b>	YP-Ab-00713
<b>Isotype</b>	IgG
<b>Reactivity</b>	Human;Rat;Mouse;
<b>Applications</b>	WB;ELISA
<b>Gene Name</b>	USO1
<b>Protein Name</b>	General vesicular transport factor p115
<b>Immunogen</b>	The antiserum was produced against synthesized peptide derived from human USO1. AA range:913-962
<b>Specificity</b>	p115 Polyclonal Antibody detects endogenous levels of p115 protein.
<b>Formulation</b>	Liquid in PBS containing 50% glycerol, 0.5% BSA and 0.02% sodium azide.
<b>Source</b>	Polyclonal, Rabbit,IgG
<b>Purification</b>	The antibody was affinity-purified from rabbit antiserum by affinity-chromatography using epitope-specific immunogen.
<b>Dilution</b>	Western Blot: 1/500 - 1/2000. ELISA: 1/40000. Not yet tested in other applications.
<b>Concentration</b>	1 mg/ml
<b>Purity</b>	≥90%
<b>Storage Stability</b>	-20°C/1 year
<b>Synonyms</b>	USO1; VDP; General vesicular transport factor p115; Protein USO1 homolog; Transcytosis-associated protein; TAP; Vesicle-docking protein
<b>Observed Band</b>	108kD
<b>Cell Pathway</b>	Cytoplasm, cytosol . Golgi apparatus membrane ; Peripheral membrane protein . Recycles between the cytosol and the Golgi apparatus during interphase. During interphase, the phosphorylated form is found exclusively in cytosol; the unphosphorylated form is associated with Golgi apparatus membranes. .
<b>Tissue Specificity</b>	Epithelium,Human skeletal muscle,Liver,Uterus,
<b>Function</b>	domain:Composed of a globular head, an elongated tail (coiled-coil) and a highly acidic C-terminal domain.,function:General vesicular transport factor required for intercisternal transport in the Golgi stack; it is required for transcytotic fusion and/or subsequent binding of the vesicles to the target membrane. May well act as a vesicular anchor by interacting with the target membrane and holding the vesicular and target membranes in proximity.,PTM:Phosphorylated in a cell cycle-specific manner; phosphorylated in interphase but not in mitotic cells. Dephosphorylated protein associates with the Golgi membrane; phosphorylation promotes dissociation.,similarity:Belongs to the VDP/USO1/EDE1 family.,subcellular location:Recycles between the cytosol and the Golgi apparatus during interphase.,



## Background

The protein encoded by this gene is a peripheral membrane protein which recycles between the cytosol and the Golgi apparatus during interphase. It is regulated by phosphorylation: dephosphorylated protein associates with the Golgi membrane and dissociates from the membrane upon phosphorylation. Ras-associated protein 1 recruits this protein to coat protein complex II (COPII) vesicles during budding from the endoplasmic reticulum, where it interacts with a set of COPII vesicle-associated SNAREs to form a cis-SNARE complex that promotes targeting to the Golgi apparatus. Alternative splicing results in multiple transcript variants. [provided by RefSeq, Feb 2014],

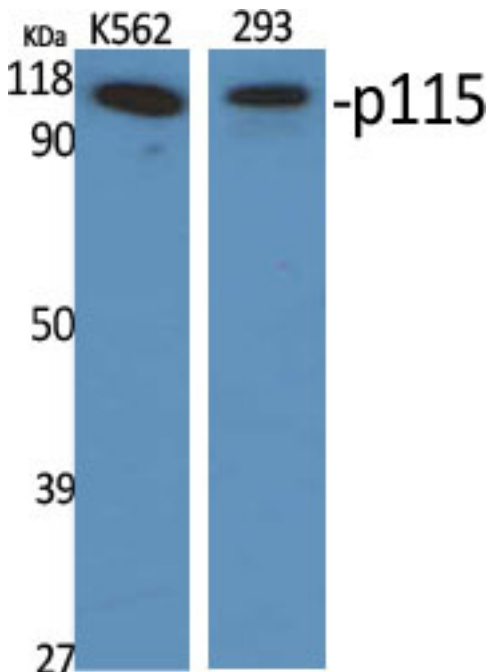
## matters needing attention

Avoid repeated freezing and thawing!

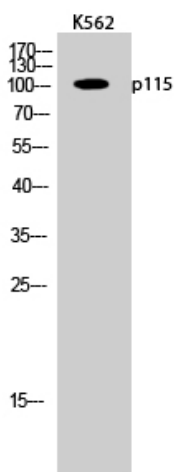
## Usage suggestions

This product can be used in immunological reaction related experiments. For more information, please consult technical personnel.

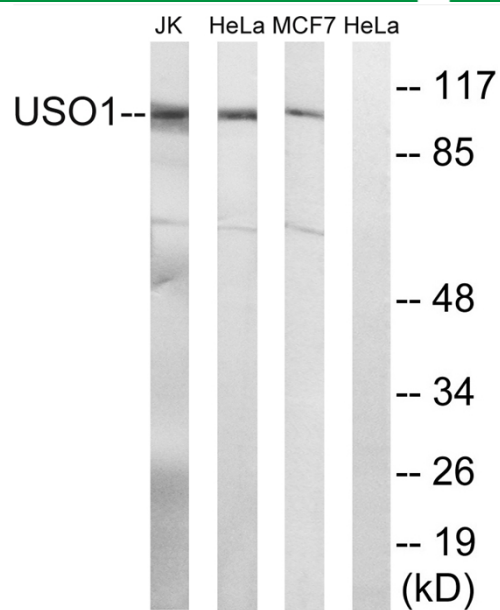
## Products Images



Western Blot analysis of various cells using p115 Polyclonal Antibody diluted at 1:2000



Western Blot analysis of K562 cells using p115 Polyclonal Antibody diluted at 1:2000



Western blot analysis of lysates from MCF-7, HeLa, and Jurkat cells, using USO1 Antibody. The lane on the right is blocked with the synthesized peptide.