



# YT1943

## Nup160 Polyclonal Antibody

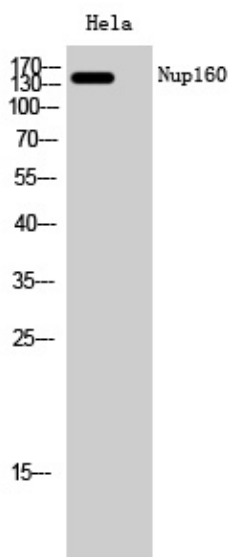
<b>Catalog No</b>	YP-Ab-00709
<b>Isotype</b>	IgG
<b>Reactivity</b>	Human;Mouse
<b>Applications</b>	WB;ELISA
<b>Gene Name</b>	NUP160
<b>Protein Name</b>	Nuclear pore complex protein Nup160
<b>Immunogen</b>	The antiserum was produced against synthesized peptide derived from human NUP160. AA range:392-441
<b>Specificity</b>	Nup160 Polyclonal Antibody detects endogenous levels of Nup160 protein.
<b>Formulation</b>	Liquid in PBS containing 50% glycerol, 0.5% BSA and 0.02% sodium azide.
<b>Source</b>	Polyclonal, Rabbit,IgG
<b>Purification</b>	The antibody was affinity-purified from rabbit antiserum by affinity-chromatography using epitope-specific immunogen.
<b>Dilution</b>	Western Blot: 1/500 - 1/2000. ELISA: 1/20000. Not yet tested in other applications.
<b>Concentration</b>	1 mg/ml
<b>Purity</b>	≥90%
<b>Storage Stability</b>	-20°C/1 year
<b>Synonyms</b>	NUP160; KIAA0197; NUP120; Nuclear pore complex protein Nup160; 160 kDa nucleoporin; Nucleoporin Nup160
<b>Observed Band</b>	140kD
<b>Cell Pathway</b>	Nucleus, nuclear pore complex .
<b>Tissue Specificity</b>	Bone marrow,Epithelium,Muscle,Skin,Small intestine,Testis,Trachea,
<b>Function</b>	caution:It is uncertain whether Met-1 or Met-35 is the initiator.,function:Involved in poly(A)+ RNA transport.,sequence caution:Probable cloning artifact. Aberrant splice sites.,subunit:Forms part of the Nup160 subcomplex in the nuclear pore which is composed of Nup160, Nup133, Nup107 and Nup96. This complex plays a role in RNA export and in tethering Nup98 and Nup153 to the nucleus.,
<b>Background</b>	nucleoporin 160(NUP160) Homo sapiens NUP160 is 1 of up to 60 proteins that make up the 120-MD nuclear pore complex, which mediates nucleoplasmic transport.[supplied by OMIM, Apr 2004],
<b>matters needing attention</b>	Avoid repeated freezing and thawing!



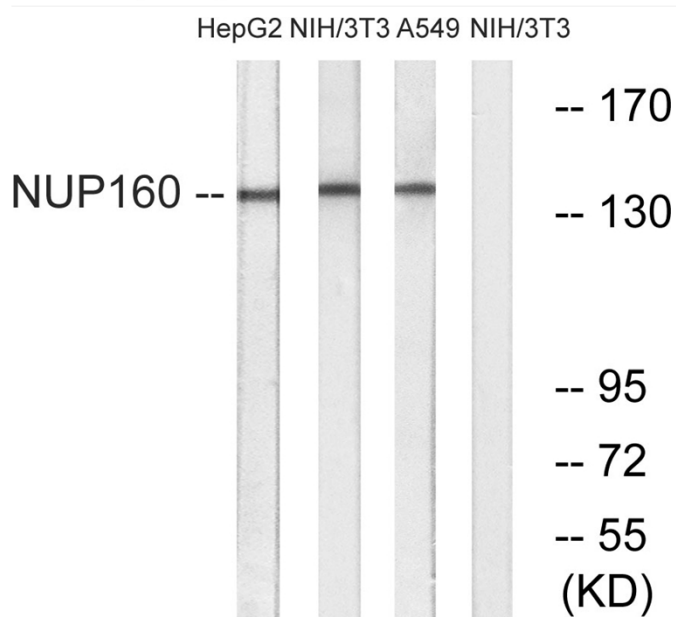
## Usage suggestions

This product can be used in immunological reaction related experiments. For more information, please consult technical personnel.

## Products Images



Western Blot analysis of HeLa cells using Nup160 Polyclonal Antibody diluted at 1:2000 cells nucleus extracted by Minute TM Cytoplasmic and Nuclear Fractionation kit (SC-003, Inventbiotech, MN, USA).



Western blot analysis of lysates from NIH/3T3, A549, and HepG2 cells, using NUP160 Antibody. The lane on the right is blocked with the synthesized peptide.