



GS28 Polyclonal Antibody

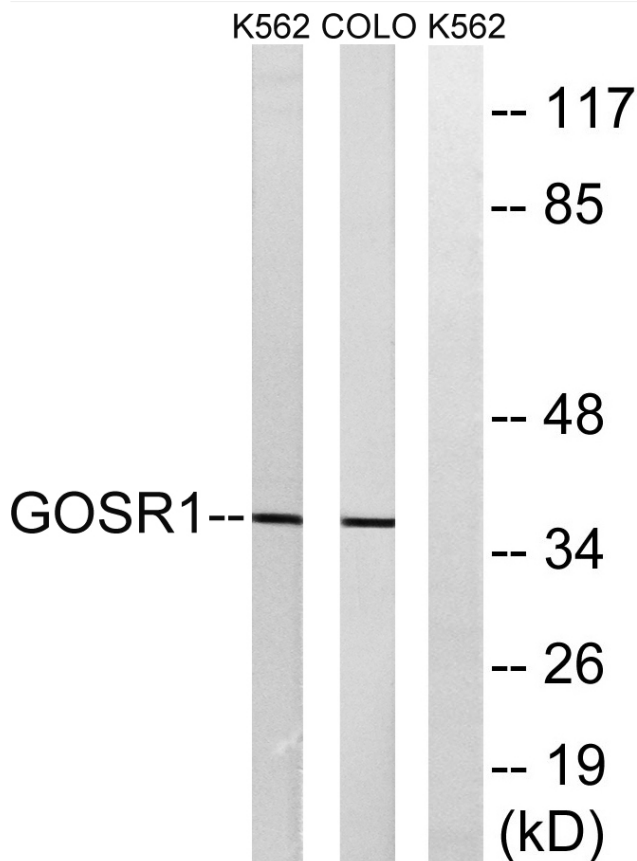
Catalog No	YP-Ab-00703
Isotype	IgG
Reactivity	Human;Rat;Mouse;
Applications	WB;ELISA
Gene Name	GOSR1
Protein Name	Golgi SNAP receptor complex member 1
Immunogen	The antiserum was produced against synthesized peptide derived from human GOSR1. AA range:11-60
Specificity	GS28 Polyclonal Antibody detects endogenous levels of GS28 protein.
Formulation	Liquid in PBS containing 50% glycerol, 0.5% BSA and 0.02% sodium azide.
Source	Polyclonal, Rabbit,IgG
Purification	The antibody was affinity-purified from rabbit antiserum by affinity-chromatography using epitope-specific immunogen.
Dilution	Western Blot: 1/500 - 1/2000. ELISA: 1/10000. Not yet tested in other applications.
Concentration	1 mg/ml
Purity	≥90%
Storage Stability	-20°C/1 year
Synonyms	GOSR1; GS28; Golgi SNAP receptor complex member 1; 28 kDa Golgi SNARE protein; 28 kDa cis-Golgi SNARE p28; GOS-28
Observed Band	28kD
Cell Pathway	Golgi apparatus membrane ; Single-pass type IV membrane protein . Localizes throughout the Golgi apparatus, with lowest levels in the trans-Golgi network (By similarity). Enriched on vesicular components at the terminal rims of the Golgi. Found in Golgi microtubules at low temperature (15 degrees Celsius). .
Tissue Specificity	Colon carcinoma,Prostate,Testis,Umbilical cord blood,
Function	function:Involved in transport from the ER to the Golgi apparatus as well as in intra-Golgi transport.,similarity:Belongs to the GOSR1 family.,subcellular location:Enriched on vesicular components at the terminal rims of the Golgi.,subunit:Interacts with GABARAPL2. Identified in a unique SNARE complex composed of the Golgi SNAREs GOSR2, STX5 and YKT6.,
Background	This gene encodes a trafficking membrane protein which transports proteins among the endoplasmic reticulum and the Golgi and between Golgi compartments. This protein is considered an essential component of the Golgi SNAP receptor (SNARE) complex. Alternatively spliced transcript variants encoding distinct isoforms have been found for this gene. [provided by RefSeq, Jul 2008],

**matters needing attention**

Avoid repeated freezing and thawing!

Usage suggestions

This product can be used in immunological reaction related experiments. For more information, please consult technical personnel.

Products Images

Western blot analysis of lysates from COLO and K562 cells, using GOSR1 Antibody. The lane on the right is blocked with the synthesized peptide.