



# GRASP55 Polyclonal Antibody

<b>Catalog No</b>	YP-Ab-00702
<b>Isotype</b>	IgG
<b>Reactivity</b>	Human;Mouse;Rat
<b>Applications</b>	WB;IHC;IF;ELISA
<b>Gene Name</b>	GORASP2
<b>Protein Name</b>	Golgi reassembly-stacking protein 2
<b>Immunogen</b>	The antiserum was produced against synthesized peptide derived from human GORASP2. AA range:181-230
<b>Specificity</b>	GRASP55 Polyclonal Antibody detects endogenous levels of GRASP55 protein.
<b>Formulation</b>	Liquid in PBS containing 50% glycerol, 0.5% BSA and 0.02% sodium azide.
<b>Source</b>	Polyclonal, Rabbit,IgG
<b>Purification</b>	The antibody was affinity-purified from rabbit antiserum by affinity-chromatography using epitope-specific immunogen.
<b>Dilution</b>	WB: 1/500 - 1/2000. IHC: 1/100 - 1/300. ELISA: 1/40000.. IF 1:50-200
<b>Concentration</b>	1 mg/ml
<b>Purity</b>	≥90%
<b>Storage Stability</b>	-20°C/1 year
<b>Synonyms</b>	GORASP2; GOLPH6; Golgi reassembly-stacking protein 2; GRS2; Golgi phosphoprotein 6; GOLPH6; Golgi reassembly-stacking protein of 55 kDa; GRASP55; p59
<b>Observed Band</b>	47kD
<b>Cell Pathway</b>	Golgi apparatus membrane ; Lipid-anchor . Endoplasmic reticulum membrane . Golgi apparatus . Detected in the intermediate Golgi, membrane-associated (By similarity). ER stress triggers its relocalization from Golgi to ER membrane (PubMed:27062250, PubMed:28067262). .
<b>Tissue Specificity</b>	Epithelium,Testis,Uterus,
<b>Function</b>	function:May be involved in assembly and membrane stacking of the Golgi cisternae, and in the process by which Golgi stacks reform after mitotic breakdown. May regulate the intracellular transport and presentation of a defined set of transmembrane proteins, such as transmembrane Tgfa.,PTM:Myristoylated. Myristoylation is essential for the Golgi targeting.,PTM:Palmitoylated.,PTM:Phosphorylated in mitotic cells.,similarity:Belongs to the GORASP family.,similarity:Contains 1 PDZ (DHR) domain.,subunit:Forms a RAB2 effector complex with BLZF1/Golgin 45 in the medial Golgi. Interacts with members of the p24 cargo receptors. Interacts with CNIH and the cytoplasmic domain of transmembrane TGFA, prior its transit in the trans-Golgi. Does not interact with GM130.,

**Background**

This gene encodes a member of the Golgi reassembly stacking protein family. These proteins may play a role in the stacking of Golgi cisternae and Golgi ribbon formation, as well as Golgi fragmentation during apoptosis or mitosis. The encoded protein also plays a role in the intracellular transport of transforming growth factor alpha and may function as a molecular chaperone. A pseudogene of this gene is located on the short arm of chromosome 2. Alternatively spliced transcript variants encoding multiple isoforms have been observed for this gene. [provided by RefSeq, Jan 2011],

**matters needing attention**

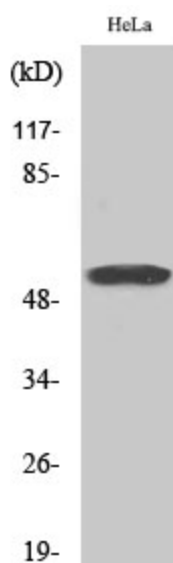
Avoid repeated freezing and thawing!

**Usage suggestions**

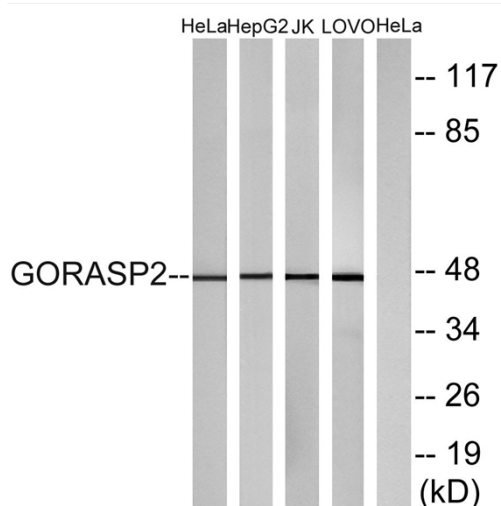
This product can be used in immunological reaction related experiments. For more information, please consult technical personnel.



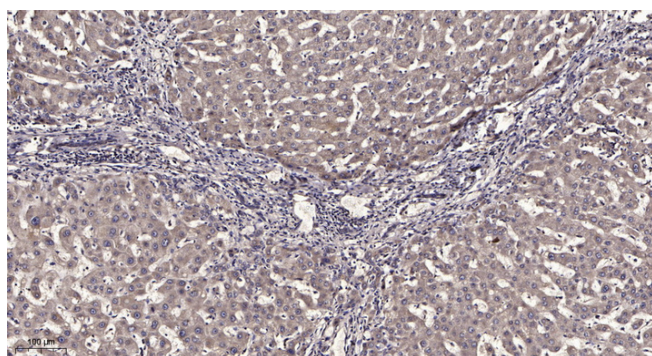
## Products Images



Western Blot analysis of various cells using GRASP55 Polyclonal Antibody



Western blot analysis of lysates from HeLa, HepG2, Jurkat, and LOVO cells, using GORASP2 Antibody. The lane on the right is blocked with the synthesized peptide.



Immunohistochemical analysis of paraffin-embedded human liver cancer. 1, Antibody was diluted at 1:200(4° overnight). 2, Tris-EDTA,pH9.0 was used for antigen retrieval. 3,Secondary antibody was diluted at 1:200(room temperature, 45min).