



ERGIC-3 Polyclonal Antibody

Catalog No	YP-Ab-00696
Isotype	IgG
Reactivity	Human;Mouse
Applications	WB;IHC;IF;ELISA
Gene Name	ERGIC3
Protein Name	Endoplasmic reticulum-Golgi intermediate compartment protein 3
Immunogen	The antiserum was produced against synthesized peptide derived from human ERGIC3. AA range:321-370
Specificity	ERGIC-3 Polyclonal Antibody detects endogenous levels of ERGIC-3 protein.
Formulation	Liquid in PBS containing 50% glycerol, 0.5% BSA and 0.02% sodium azide.
Source	Polyclonal, Rabbit,IgG
Purification	The antibody was affinity-purified from rabbit antiserum by affinity-chromatography using epitope-specific immunogen.
Dilution	Western Blot: 1/500 - 1/2000. Immunohistochemistry: 1/100 - 1/300. Immunofluorescence: 1/200 - 1/1000. ELISA: 1/20000. Not yet tested in other applications.
Concentration	1 mg/ml
Purity	≥90%
Storage Stability	-20°C/1 year
Synonyms	ERGIC3; C20orf47; ERV46; SDBCAG84; CGI-54; Endoplasmic reticulum-Golgi intermediate compartment protein 3; Serologically defined breast cancer antigen NY-BR-84
Observed Band	43kD
Cell Pathway	Endoplasmic reticulum-Golgi intermediate compartment membrane ; Multi-pass membrane protein . Golgi apparatus, cis-Golgi network membrane ; Multi-pass membrane protein . Endoplasmic reticulum membrane ; Multi-pass membrane protein . Cycles between the endoplasmic reticulum and the Golgi.
Tissue Specificity	Brain,Embryo,Fetal liver,Liver,Mammary gland,Skin,
Function	function:Possible role in transport between endoplasmic reticulum and Golgi.,similarity:Belongs to the ERGIC family.,subcellular location:Cycles between the endoplasmic reticulum and the Golgi.,subunit:Interacts with ERGIC1/ERGIC32.,
Background	function:Possible role in transport between endoplasmic reticulum and Golgi.,similarity:Belongs to the ERGIC family.,subcellular location:Cycles between the endoplasmic reticulum and the Golgi.,subunit:Interacts with ERGIC1/ERGIC32.,



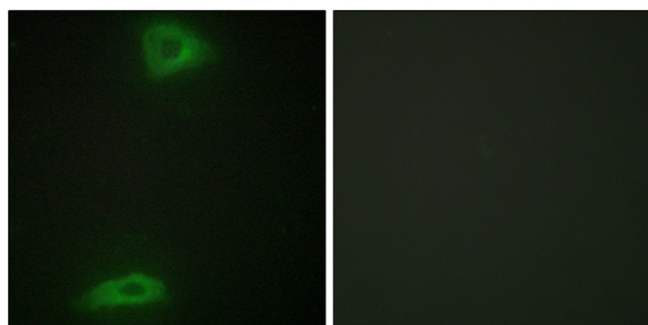
matters needing attention

Avoid repeated freezing and thawing!

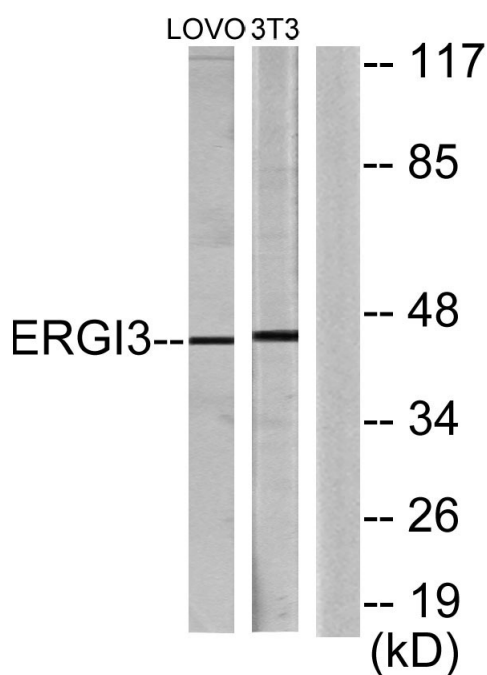
Usage suggestions

This product can be used in immunological reaction related experiments. For more information, please consult technical personnel.

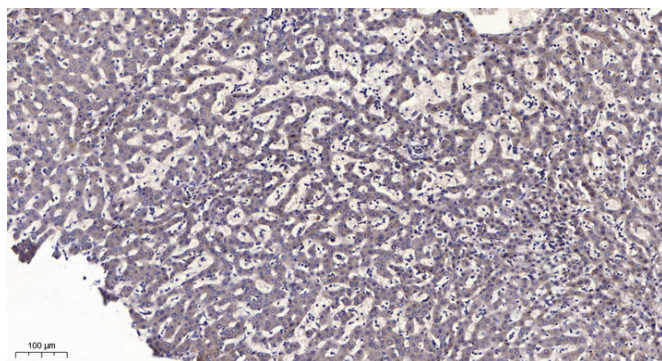
Products Images



Immunofluorescence analysis of HepG2 cells, using ERG13 Antibody. The picture on the right is blocked with the synthesized peptide.



Western blot analysis of lysates from LOVO and NIH/3T3 cells, using ERG13 Antibody. The lane on the right is blocked with the synthesized peptide.



Immunohistochemical analysis of paraffin-embedded human liver cancer. 1, Antibody was diluted at 1:200(4° overnight). 2, Tris-EDTA,pH9.0 was used for antigen retrieval. 3,Secondary antibody was diluted at 1:200(room temperature, 45min).