



DBP Polyclonal Antibody

| | |
|---------------------------|---|
| Catalog No | YP-Ab-00691 |
| Isotype | IgG |
| Reactivity | Human;Monkey |
| Applications | WB;ELISA |
| Gene Name | GC |
| Protein Name | Vitamin D-binding protein |
| Immunogen | Synthesized peptide derived from DBP . at AA range: 90-170 |
| Specificity | DBP Polyclonal Antibody detects endogenous levels of DBP protein. |
| Formulation | Liquid in PBS containing 50% glycerol, 0.5% BSA and 0.02% sodium azide. |
| Source | Polyclonal, Rabbit,IgG |
| Purification | The antibody was affinity-purified from rabbit antiserum by affinity-chromatography using epitope-specific immunogen. |
| Dilution | Western Blot: 1/500 - 1/2000. ELISA: 1/40000. Not yet tested in other applications. |
| Concentration | 1 mg/ml |
| Purity | ≥90% |
| Storage Stability | -20°C/1 year |
| Synonyms | GC; Vitamin D-binding protein; DBP; VDB; Gc-globulin; Group-specific component |
| Observed Band | 55kD |
| Cell Pathway | Secreted . |
| Tissue Specificity | Expressed in the liver. Found in plasma, ascites, cerebrospinal fluid and urine. |
| Function | function:Multifunctional protein found in plasma, ascitic fluid, cerebrospinal fluid, and urine and on the surface of many cell types. In plasma, it carries the vitamin D sterols and prevents polymerization of actin by binding its monomers. DBP associates with membrane-bound immunoglobulin on the surface of B-lymphocytes and with IgG Fc receptor on the membranes of T-lymphocytes.,polymorphism:Over 80 variants of human DBP have been identified. The three most common alleles are called GC*1F, GC*1S, and GC*2. The sequence shown is that of the GC*2 allele.,similarity:Belongs to the ALB/AFP/VDB family.,similarity:Contains 3 albumin domains., |
| Background | The protein encoded by this gene belongs to the albumin gene family. It is a multifunctional protein found in plasma, ascitic fluid, cerebrospinal fluid and on the surface of many cell types. It binds to vitamin D and its plasma metabolites and transports them to target tissues. Alternatively spliced transcript variants encoding different isoforms have been found for this gene.[provided by RefSeq, Feb 2011], |



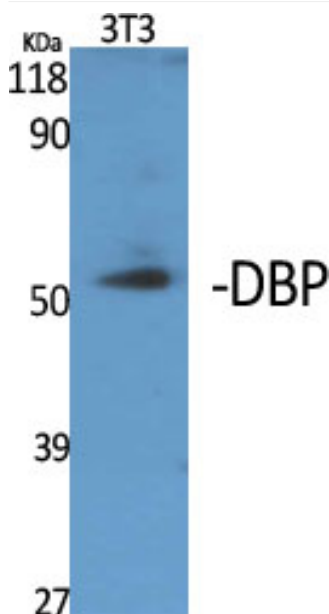
matters needing attention

Avoid repeated freezing and thawing!

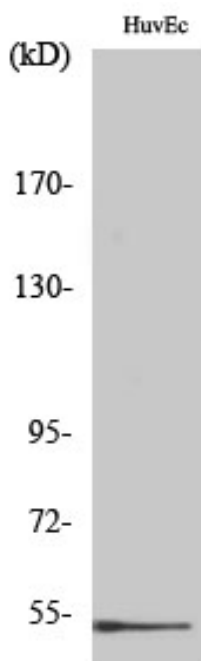
Usage suggestions

This product can be used in immunological reaction related experiments. For more information, please consult technical personnel.

Products Images



Western Blot analysis of various cells using DBP Polyclonal Antibody



Western Blot analysis of COS7 cells using DBP Polyclonal Antibody