

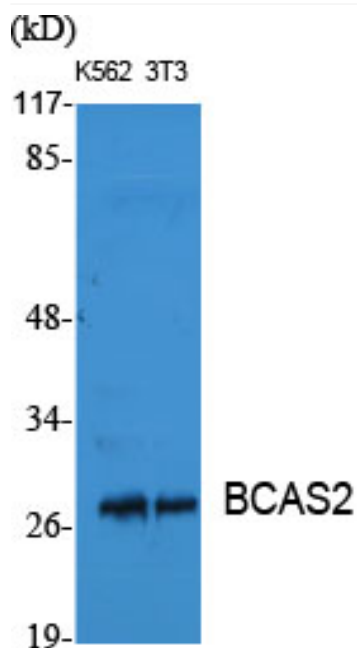


# BCAS2 Polyclonal Antibody

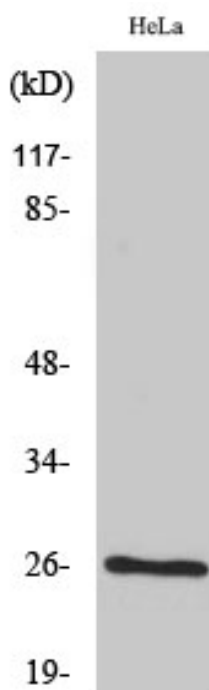
<b>Catalog No</b>	YP-Ab-00680
<b>Isotype</b>	IgG
<b>Reactivity</b>	Human;Mouse;Rat;Monkey
<b>Applications</b>	WB;ELISA
<b>Gene Name</b>	BCAS2
<b>Protein Name</b>	Pre-mRNA-splicing factor SPF27
<b>Immunogen</b>	The antiserum was produced against synthesized peptide derived from human BCAS2. AA range:176-225
<b>Specificity</b>	BCAS2 Polyclonal Antibody detects endogenous levels of BCAS2 protein.
<b>Formulation</b>	Liquid in PBS containing 50% glycerol, 0.5% BSA and 0.02% sodium azide.
<b>Source</b>	Polyclonal, Rabbit,IgG
<b>Purification</b>	The antibody was affinity-purified from rabbit antiserum by affinity-chromatography using epitope-specific immunogen.
<b>Dilution</b>	Western Blot: 1/500 - 1/2000. ELISA: 1/5000. Not yet tested in other applications.
<b>Concentration</b>	1 mg/ml
<b>Purity</b>	≥90%
<b>Storage Stability</b>	-20°C/1 year
<b>Synonyms</b>	BCAS2; DAM1; Pre-mRNA-splicing factor SPF27; Breast carcinoma-amplified sequence 2; DNA amplified in mammary carcinoma 1 protein; Spliceosome-associated protein SPF 27
<b>Observed Band</b>	27kD
<b>Cell Pathway</b>	Nucleus . Nucleus, nucleolus .
<b>Tissue Specificity</b>	Ubiquitously expressed.
<b>Function</b>	function:Involved in mRNA splicing.,similarity:Belongs to the SPF27 family.,subunit:Associated with the spliceosome.,tissue specificity:Ubiquitously expressed.,
<b>Background</b>	function:Involved in mRNA splicing.,similarity:Belongs to the SPF27 family.,subunit:Associated with the spliceosome.,tissue specificity:Ubiquitously expressed.,
<b>matters needing attention</b>	Avoid repeated freezing and thawing!

**Usage suggestions**

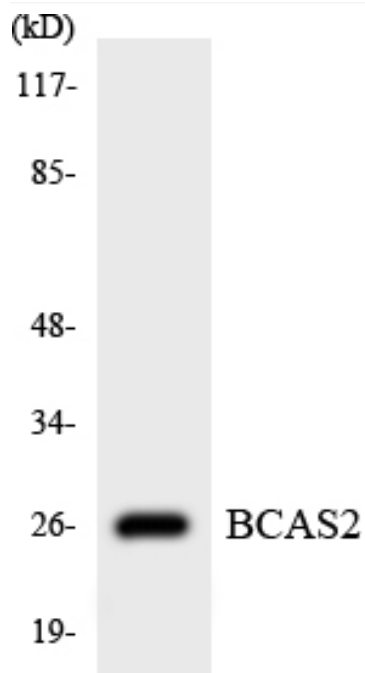
This product can be used in immunological reaction related experiments. For more information, please consult technical personnel.

**Products Images**

Western Blot analysis of various cells using BCAS2 Polyclonal Antibody diluted at 1:1000 cells nucleus extracted by Minute TM Cytoplasmic and Nuclear Fractionation kit (SC-003, Inventbiotech, MN, USA).



Western Blot analysis of COS7 cells using BCAS2 Polyclonal Antibody diluted at 1:1000 cells nucleus extracted by Minute TM Cytoplasmic and Nuclear Fractionation kit (SC-003, Inventbiotech, MN, USA).



Western blot analysis of the lysates from HUVECcells using BCAS2 antibody.