

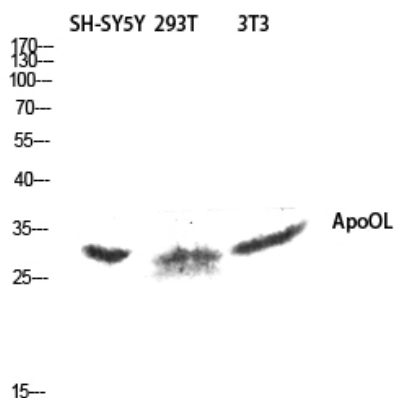


ApoOL Polyclonal Antibody

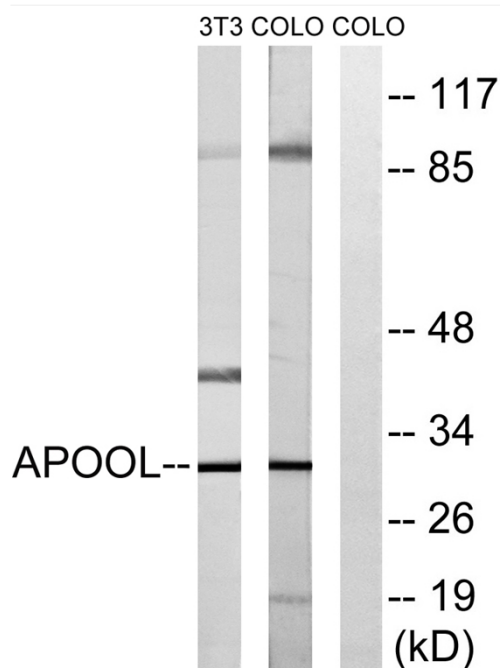
Catalog No	YP-Ab-00674
Isotype	IgG
Reactivity	Human;Mouse;Rat
Applications	WB;ELISA
Gene Name	APOOL
Protein Name	Apolipoprotein O-like
Immunogen	The antiserum was produced against synthesized peptide derived from human APOOL. AA range:219-268
Specificity	ApoOL Polyclonal Antibody detects endogenous levels of ApoOL protein.
Formulation	Liquid in PBS containing 50% glycerol, 0.5% BSA and 0.02% sodium azide.
Source	Polyclonal, Rabbit,IgG
Purification	The antibody was affinity-purified from rabbit antiserum by affinity-chromatography using epitope-specific immunogen.
Dilution	Western Blot: 1/500 - 1/2000. ELISA: 1/40000. Not yet tested in other applications.
Concentration	1 mg/ml
Purity	≥90%
Storage Stability	-20°C/1 year
Synonyms	APOOL; CXorf33; FAM121A; Apolipoprotein O-like; Protein FAM121A
Observed Band	30kD
Cell Pathway	Mitochondrion inner membrane ; Multi-pass membrane protein . Mitochondrion .
Tissue Specificity	Liver,
Function	similarity:Belongs to the apolipoprotein O family.,
Background	This gene encodes a protein which contains an apolipoprotein O superfamily domain. This domain is found on proteins in circulating lipoprotein complexes. [provided by RefSeq, Sep 2011],
matters needing attention	Avoid repeated freezing and thawing!
Usage suggestions	This product can be used in immunological reaction related experiments. For more information, please consult technical personnel.



Products Images



Western blot analysis of SH-SY5Y 293T 3T3 lysis using ApoOL antibody. Antibody was diluted at 1:1000



Western blot analysis of lysates from COLO and NIH/3T3 cells, using APOOL Antibody. The lane on the right is blocked with the synthesized peptide.