

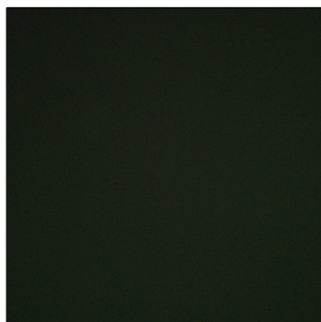
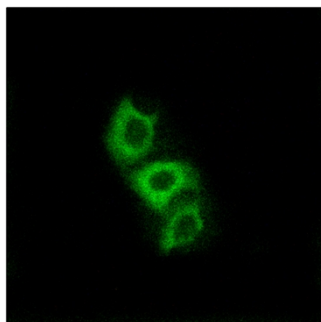


ApoL5 Polyclonal Antibody

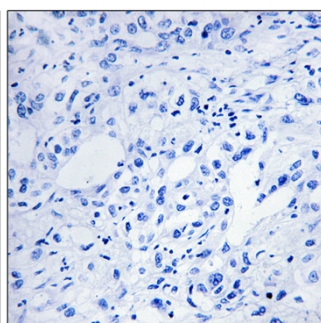
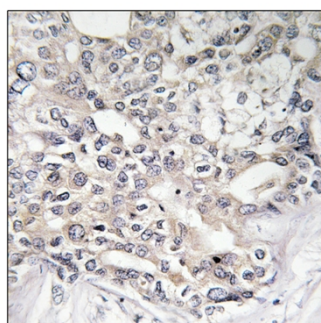
Catalog No	YP-Ab-00673
Isotype	IgG
Reactivity	Human;Rat;Mouse;
Applications	IHC;IF;ELISA
Gene Name	APOL5
Protein Name	Apolipoprotein L5
Immunogen	The antiserum was produced against synthesized peptide derived from human APOL5. AA range:384-433
Specificity	ApoL5 Polyclonal Antibody detects endogenous levels of ApoL5 protein.
Formulation	Liquid in PBS containing 50% glycerol, 0.5% BSA and 0.02% sodium azide.
Source	Polyclonal, Rabbit,IgG
Purification	The antibody was affinity-purified from rabbit antiserum by affinity-chromatography using epitope-specific immunogen.
Dilution	Immunohistochemistry: 1/100 - 1/300. Immunofluorescence: 1/200 - 1/1000. ELISA: 1/40000. Not yet tested in other applications.
Concentration	1 mg/ml
Purity	≥90%
Storage Stability	-20°C/1 year
Synonyms	APOL5; Apolipoprotein L5; Apolipoprotein L-V; ApoL-V
Observed Band	
Cell Pathway	Cytoplasm .
Tissue Specificity	Low level of expression; detected in uterus, testis, skeletal muscle and stomach.
Function	function:May affect the movement of lipids in the cytoplasm or allow the binding of lipids to organelles.,similarity:Belongs to the apolipoprotein L family.,tissue specificity:Low level of expression; detected in uterus, testis, skeletal muscle and stomach.,
Background	This gene is a member of the apolipoprotein L gene family. The encoded protein is found in the cytoplasm, where it may affect the movement of lipids or allow the binding of lipids to organelles. [provided by RefSeq, Jul 2008],
matters needing attention	Avoid repeated freezing and thawing!
Usage suggestions	This product can be used in immunological reaction related experiments. For more information, please consult technical personnel.



Products Images



Immunofluorescence analysis of A549 cells, using APOL5 Antibody. The picture on the right is blocked with the synthesized peptide.



Immunohistochemistry analysis of paraffin-embedded human liver carcinoma tissue, using APOL5 Antibody. The picture on the right is blocked with the synthesized peptide.