



TP53INP2 Polyclonal Antibody

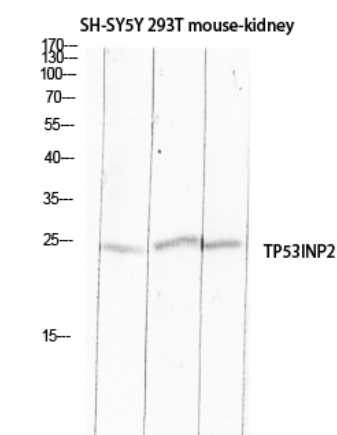
Catalog No	YP-Ab-00583
Isotype	IgG
Reactivity	Human;Rat;Mouse;
Applications	WB;IHC;IF;ELISA
Gene Name	TP53INP2
Protein Name	Tumor protein p53-inducible nuclear protein 2
Immunogen	The antiserum was produced against synthesized peptide derived from the C-terminal region of human TP53INP2. AA range:161-210
Specificity	TP53INP2 Polyclonal Antibody detects endogenous levels of TP53INP2 protein.
Formulation	Liquid in PBS containing 50% glycerol, 0.5% BSA and 0.02% sodium azide.
Source	Polyclonal, Rabbit,IgG
Purification	The antibody was affinity-purified from rabbit antiserum by affinity-chromatography using epitope-specific immunogen.
Dilution	WB: 1/500 - 1/2000. IHC-p: 1:100-1:300. ELISA: 1/10000.. IF 1:50-200
Concentration	1 mg/ml
Purity	≥90%
Storage Stability	-20°C/1 year
Synonyms	TP53INP2; C20orf110; DOR; PINH; Tumor protein p53-inducible nuclear protein 2; Diabetes and obesity-regulated gene; p53-inducible protein U; PIG-U
Observed Band	24kD
Cell Pathway	Cytoplasm, cytosol. Nucleus. Nucleus, PML body. Cytoplasmic vesicle, autophagosome. Shuttles between the nucleus and the cytoplasm, depending on cellular stress conditions, and re-localizes to autophagosomes on autophagy activation.
Tissue Specificity	Eye,Heart,
Function	
Background	tumor protein p53 inducible nuclear protein 2(TP53INP2) Homo sapiens The protein encoded by this gene promotes autophagy and is essential for proper autophagosome formation and processing. In addition, the encoded protein can enhance rDNA transcription by helping in the assembly of the POLR1/RNA polymerase I preinitiation complex. Finally, this protein serves as a transcriptional activator for some genes. [provided by RefSeq, Jul 2016],
matters needing attention	Avoid repeated freezing and thawing!



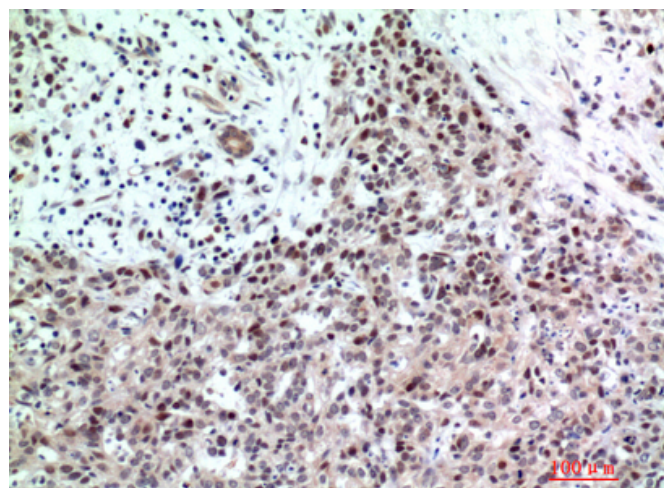
Usage suggestions

This product can be used in immunological reaction related experiments. For more information, please consult technical personnel.

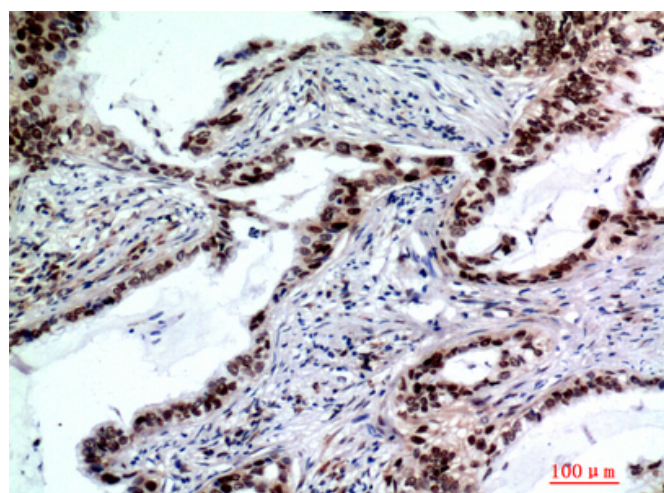
Products Images



Western blot analysis of SH-SY5Y 293T mouse-kidney lysis using TP53INP2 antibody. Antibody was diluted at 1:500. Secondary antibody(catalog#:RS0002) was diluted at 1:20000 cells nucleus extracted by Minute TM Cytoplasmic and Nuclear Fractionation kit (SC-003, Inventbiotech, MN, USA).



Immunohistochemical analysis of paraffin-embedded human-breast-cancer, antibody was diluted at 1:200



Immunohistochemical analysis of paraffin-embedded human-lungcancer, antibody was diluted at 1:200