



# BNIP-3 Polyclonal Antibody

<b>Catalog No</b>	YP-Ab-00564
<b>Isotype</b>	IgG
<b>Reactivity</b>	Human;Rat;Mouse;
<b>Applications</b>	WB;IHC;IF;ELISA
<b>Gene Name</b>	BNIP3
<b>Protein Name</b>	BCL2/adenovirus E1B 19 kDa protein-interacting protein 3
<b>Immunogen</b>	The antiserum was produced against synthesized peptide derived from the Internal region of human BNIP3. AA range:71-120
<b>Specificity</b>	BNIP-3 Polyclonal Antibody detects endogenous levels of BNIP-3 protein.
<b>Formulation</b>	Liquid in PBS containing 50% glycerol, 0.5% BSA and 0.02% sodium azide.
<b>Source</b>	Polyclonal, Rabbit,IgG
<b>Purification</b>	The antibody was affinity-purified from rabbit antiserum by affinity-chromatography using epitope-specific immunogen.
<b>Dilution</b>	WB: 1/500 - 1/2000. IHC-p: 1:100-300 ELISA: 1/20000.. IF 1:50-200
<b>Concentration</b>	1 mg/ml
<b>Purity</b>	≥90%
<b>Storage Stability</b>	-20°C/1 year
<b>Synonyms</b>	BNIP3; NIP3; BCL2/adenovirus E1B 19 kDa protein-interacting protein 3
<b>Observed Band</b>	22kD
<b>Cell Pathway</b>	Mitochondrion. Mitochondrion outer membrane; Single-pass membrane protein. Coexpression with the E1B 19-kDa protein results in a shift in NIP3 localization pattern to the nuclear envelope. Colocalizes with ACAA2 in the mitochondria. Colocalizes with SPATA18 at the mitochondrion outer membrane.
<b>Tissue Specificity</b>	B-cell,Brain,Cerebellum,Kidney,Testis,
<b>Function</b>	function:Apoptosis-inducing protein that, which can overcome BCL2 suppression. May play a role in repartitioning calcium between the two major intracellular calcium stores in association with BCL2.,similarity:Belongs to the NIP3 family.,subcellular location:Coexpression with the E1B 19-kDa protein results in a shift in NIP3 localization pattern to the nuclear envelope.,subunit:Homodimer. Binds to BCL2. Interacts with BNIP3L. Also can interact with adenovirus E1B 19 kDa protein or Epstein-Barr virus BHRF1.,
<b>Background</b>	This gene is encodes a mitochondrial protein that contains a BH3 domain and acts as a pro-apoptotic factor. The encoded protein interacts with anti-apoptotic proteins, including the E1B 19 kDa protein and Bcl2. This gene is silenced in tumors by DNA methylation. [provided by RefSeq, Dec 2014],

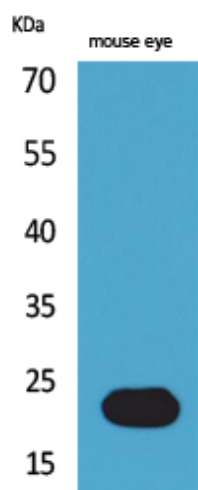
**matters needing attention**

Avoid repeated freezing and thawing!

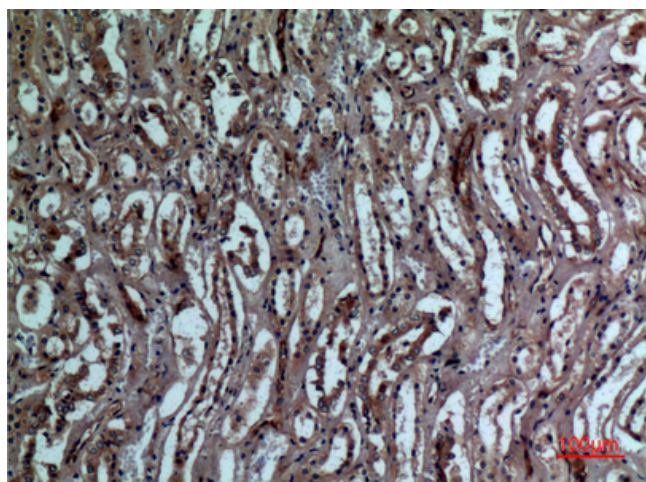
**Usage suggestions**

This product can be used in immunological reaction related experiments. For more information, please consult technical personnel.

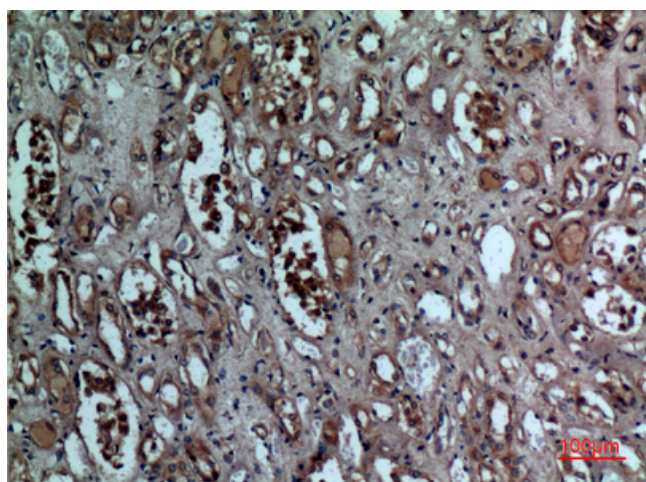
## Products Images



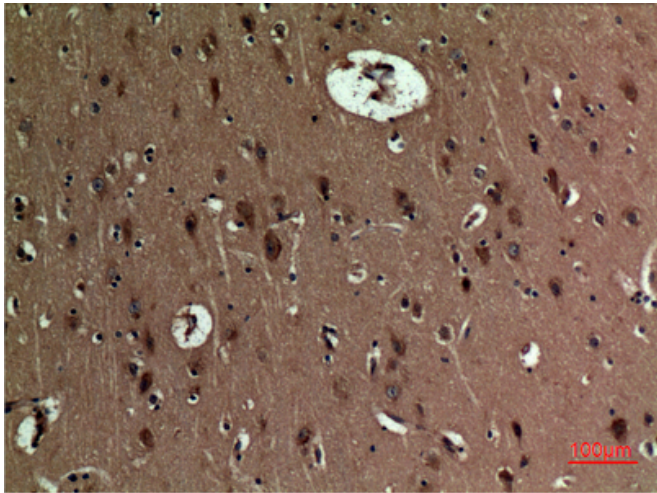
Western Blot analysis of mouse eye cells using BNIP-3 Polyclonal Antibody. Secondary antibody(catalog#:RS0002) was diluted at 1:20000



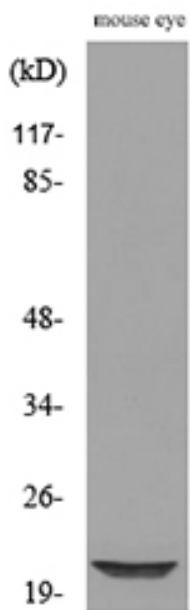
Immunohistochemical analysis of paraffin-embedded human-kidney, antibody was diluted at 1:100



Immunohistochemical analysis of paraffin-embedded human-kidney, antibody was diluted at 1:100



Immunohistochemical analysis of paraffin-embedded human-brain, antibody was diluted at 1:100



Western blot analysis of lysate from mouse eye cells, using BNIP3 Antibody.