



# PMS2/PMS2CL Polyclonal Antibody

<b>Catalog No</b>	YP-Ab-00498
<b>Isotype</b>	IgG
<b>Reactivity</b>	Human;Rat;Mouse;
<b>Applications</b>	IHC;IF;ELISA
<b>Gene Name</b>	PMS2/PMS2CL
<b>Protein Name</b>	Mismatch repair endonuclease PMS2/Protein PMS2CL
<b>Immunogen</b>	The antiserum was produced against synthesized peptide derived from human PMS2CL. AA range:125-174
<b>Specificity</b>	PMS2/PMS2CL Polyclonal Antibody detects endogenous levels of PMS2/PMS2CL protein.
<b>Formulation</b>	Liquid in PBS containing 50% glycerol, 0.5% BSA and 0.02% sodium azide.
<b>Source</b>	Polyclonal, Rabbit,IgG
<b>Purification</b>	The antibody was affinity-purified from rabbit antiserum by affinity-chromatography using epitope-specific immunogen.
<b>Dilution</b>	IHC: 1/100 - 1/300. ELISA: 1/5000.. IF 1:50-200
<b>Concentration</b>	1 mg/ml
<b>Purity</b>	≥90%
<b>Storage Stability</b>	-20°C/1 year
<b>Synonyms</b>	PMS2CL; Protein PMS2CL; PMS2-C terminal-like protein; PMS2; PMSL2; Mismatch repair endonuclease PMS2; DNA mismatch repair protein PMS2; PMS1 protein homolog 2
<b>Observed Band</b>	
<b>Cell Pathway</b>	mismatch repair complex,
<b>Tissue Specificity</b>	Fetal brain,Testis,
<b>Function</b>	caution:According to PubMed:15077197, it is a pseudogene. However, a peptide specific to this protein was identified by mass spectrometry (PubMed:17525332). Given that the product described by PubMed:15077197 is located downstream and on another frame of the transcript, it may explain why PubMed:15256438 could not detect this protein on a Western blot.,PTM:Phosphorylated upon DNA damage, probably by ATM or ATR.,sequence caution:Wrong choice of transcript.,similarity:Belongs to the DNA mismatch repair mutL/hexB family.,
<b>Background</b>	caution:According to PubMed:15077197, it is a pseudogene. However, a peptide specific to this protein was identified by mass spectrometry (PubMed:17525332). Given that the product described by PubMed:15077197 is located downstream and on another frame of the transcript, it may explain why PubMed:15256438 could not detect this protein on a Western blot.,PTM:Phosphorylated upon DNA



damage, probably by ATM or ATR.,sequence caution:Wrong choice of transcript.,similarity:Belongs to the DNA mismatch repair mutL/hexB family.,

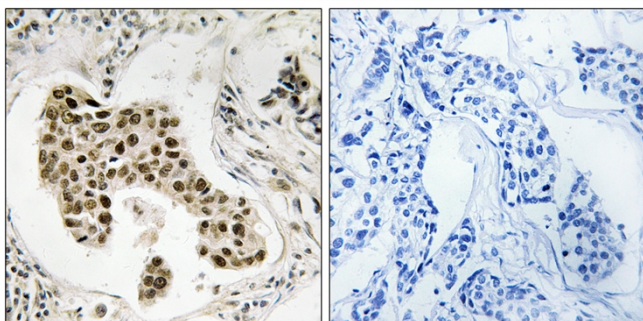
**matters needing attention**

Avoid repeated freezing and thawing!

**Usage suggestions**

This product can be used in immunological reaction related experiments. For more information, please consult technical personnel.

## Products Images



Immunohistochemistry analysis of paraffin-embedded human breast carcinoma, using PMS2/PMS2CL Antibody. The picture on the right is blocked with the synthesized peptide.