

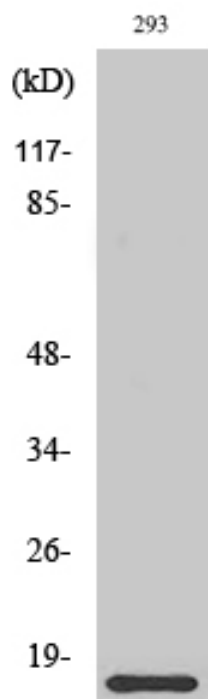


# ORAOV1 Polyclonal Antibody

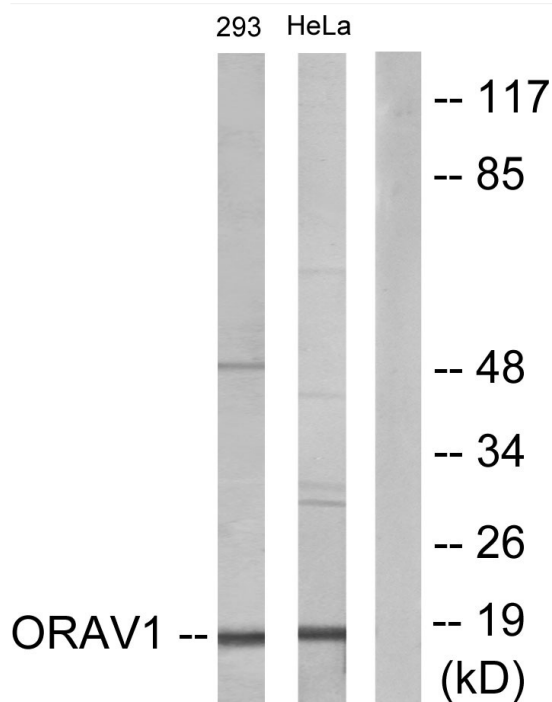
<b>Catalog No</b>	YP-Ab-00469
<b>Isotype</b>	IgG
<b>Reactivity</b>	Human;Rat;Mouse;
<b>Applications</b>	WB;IHC;IF;ELISA
<b>Gene Name</b>	ORAOV1
<b>Protein Name</b>	Oral cancer-overexpressed protein 1
<b>Immunogen</b>	The antiserum was produced against synthesized peptide derived from human ORAV1. AA range:81-130
<b>Specificity</b>	ORAOV1 Polyclonal Antibody detects endogenous levels of ORAOV1 protein.
<b>Formulation</b>	Liquid in PBS containing 50% glycerol, 0.5% BSA and 0.02% sodium azide.
<b>Source</b>	Polyclonal, Rabbit,IgG
<b>Purification</b>	The antibody was affinity-purified from rabbit antiserum by affinity-chromatography using epitope-specific immunogen.
<b>Dilution</b>	Western Blot: 1/500 - 1/2000. Immunohistochemistry: 1/100 - 1/300. Immunofluorescence: 1/200 - 1/1000. ELISA: 1/10000. Not yet tested in other applications.
<b>Concentration</b>	1 mg/ml
<b>Purity</b>	≥90%
<b>Storage Stability</b>	-20°C/1 year
<b>Synonyms</b>	ORAOV1; TAOS1; Oral cancer-overexpressed protein 1; Tumor-amplified and overexpressed sequence 1
<b>Observed Band</b>	15kD
<b>Cell Pathway</b>	Nucleus .
<b>Tissue Specificity</b>	Widely expressed. Highly expressed in placenta, kidney and skeletal muscle.
<b>Function</b>	miscellaneous:Amplified and overexpressed in oral cancer cells.,similarity:Belongs to the ORAOV1 family.,tissue specificity:Widely expressed. Highly expressed in placenta, kidney and skeletal muscle.,
<b>Background</b>	miscellaneous:Amplified and overexpressed in oral cancer cells.,similarity:Belongs to the ORAOV1 family.,tissue specificity:Widely expressed. Highly expressed in placenta, kidney and skeletal muscle.,
<b>matters needing attention</b>	Avoid repeated freezing and thawing!
<b>Usage suggestions</b>	This product can be used in immunological reaction related experiments. For more information, please consult technical personnel.



## Products Images



Western Blot analysis of various cells using ORAOV1 Polyclonal Antibody diluted at 1:2000



Western blot analysis of lysates from 293 and HeLa cells, using ORAV1 Antibody. The lane on the right is blocked with the synthesized peptide.



Immunohistochemical analysis of paraffin-embedded human spleen. 1, Antibody was diluted at 1:200(4° overnight). 2, Tris-EDTA,pH9.0 was used for antigen retrieval. 3,Secondary antibody was diluted at 1:200(room temperature, 45min).