

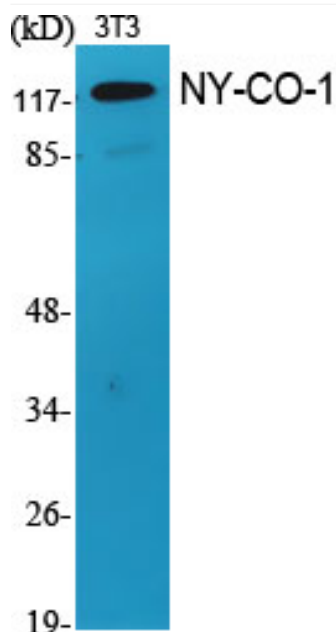


NY-CO-1 Polyclonal Antibody

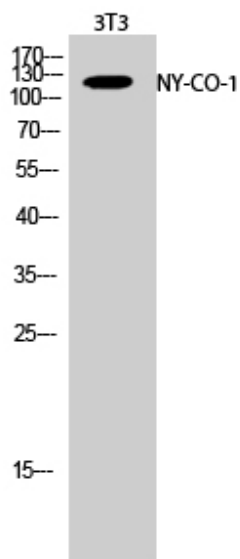
Catalog No	YP-Ab-00466
Isotype	IgG
Reactivity	Human;Mouse;Rat
Applications	WB;IHC;IF;ELISA
Gene Name	NEMF
Protein Name	Nuclear export mediator factor NEMF
Immunogen	The antiserum was produced against synthesized peptide derived from human SDCG1. AA range:881-930
Specificity	NY-CO-1 Polyclonal Antibody detects endogenous levels of NY-CO-1 protein.
Formulation	Liquid in PBS containing 50% glycerol, 0.5% BSA and 0.02% sodium azide.
Source	Polyclonal, Rabbit,IgG
Purification	The antibody was affinity-purified from rabbit antiserum by affinity-chromatography using epitope-specific immunogen.
Dilution	WB: 1/500 - 1/2000. IHC: 1/100 - 1/300. ELISA: 1/20000.. IF 1:50-200
Concentration	1 mg/ml
Purity	≥90%
Storage Stability	-20°C/1 year
Synonyms	NEMF; SDCCAG1; Nuclear export mediator factor NEMF; Antigen NY-CO-1; Serologically defined colon cancer antigen 1
Observed Band	123kD
Cell Pathway	Cytoplasm, cytosol . Nucleus .
Tissue Specificity	Expressed in brain, heart, liver, lung, spleen, and skeletal muscle. Also expressed at lower levels in stomach and testis.
Function	
Background	This gene encodes a component of the ribosome quality control complex. The encoded protein facilitates the recognition and ubiquitination of stalled 60S subunits by the ubiquitin ligase listerin. A similar protein in fly functions as a tumor suppressor. [provided by RefSeq, Jul 2016],
matters needing attention	Avoid repeated freezing and thawing!
Usage suggestions	This product can be used in immunological reaction related experiments. For more information, please consult technical personnel.



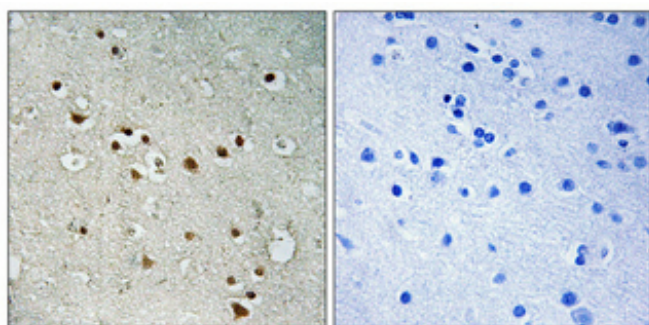
Products Images



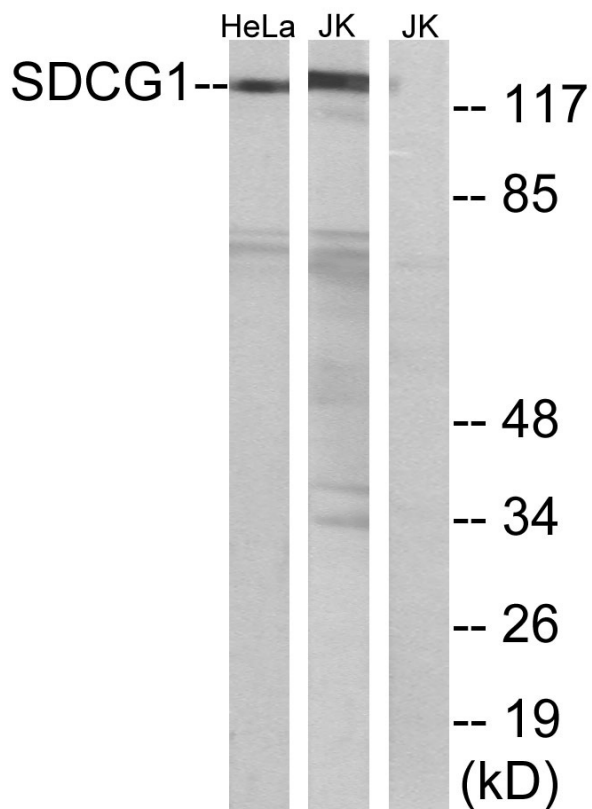
Western Blot analysis of various cells using NY-CO-1 Polyclonal Antibody



Western Blot analysis of 3T3 cells using NY-CO-1 Polyclonal Antibody



Immunohistochemical analysis of paraffin-embedded Human brain. Antibody was diluted at 1:100 (4° overnight). High-pressure and temperature Tris-EDTA, pH 8.0 was used for antigen retrieval. Negative control (right) obtained from antibody was pre-absorbed by immunogen peptide.



Western blot analysis of lysates from HeLa and Jurkat cells, using SDCG1 Antibody. The lane on the right is blocked with the synthesized peptide.