



# Granzyme A Polyclonal Antibody

<b>Catalog No</b>	YP-Ab-00415
<b>Isotype</b>	IgG
<b>Reactivity</b>	Human;Rat;Mouse;
<b>Applications</b>	IHC;IF;ELISA
<b>Gene Name</b>	GZMA
<b>Protein Name</b>	Granzyme A
<b>Immunogen</b>	The antiserum was produced against synthesized peptide derived from human GRAA. AA range:61-110
<b>Specificity</b>	Granzyme A Polyclonal Antibody detects endogenous levels of Granzyme A protein.
<b>Formulation</b>	Liquid in PBS containing 50% glycerol, 0.5% BSA and 0.02% sodium azide.
<b>Source</b>	Polyclonal, Rabbit,IgG
<b>Purification</b>	The antibody was affinity-purified from rabbit antiserum by affinity-chromatography using epitope-specific immunogen.
<b>Dilution</b>	Immunohistochemistry: 1/100 - 1/300. Immunofluorescence: 1/200 - 1/1000. ELISA: 1/5000. Not yet tested in other applications.
<b>Concentration</b>	1 mg/ml
<b>Purity</b>	≥90%
<b>Storage Stability</b>	-20°C/1 year
<b>Synonyms</b>	GZMA; CTLA3; HFSP; Granzyme A; CTL tryptase; Cytotoxic T-lymphocyte proteinase 1; Fragmentin-1; Granzyme-1; Hanukkah factor; H factor; HF
<b>Observed Band</b>	
<b>Cell Pathway</b>	[Isoform alpha]: Secreted . Cytoplasmic granule . Delivered into the target cell by perforin. .
<b>Tissue Specificity</b>	Blood,Liver,T-cell,
<b>Function</b>	catalytic activity:Hydrolysis of proteins, including fibronectin, type IV collagen and nucleolin. Preferential cleavage: -Arg- -Xaa-, -Lys- -Xaa- >> -Phe- -Xaa- in small molecule substrates.,function:This enzyme is necessary for target cell lysis in cell-mediated immune responses. It cleaves after Lys or Arg. May be involved in apoptosis.,similarity:Belongs to the peptidase S1 family. Granzyme subfamily.,similarity:Contains 1 peptidase S1 domain.,subunit:Homodimer; disulfide-linked.,
<b>Background</b>	Cytolytic T lymphocytes (CTL) and natural killer (NK) cells share the remarkable ability to recognize, bind, and lyse specific target cells. They are thought to protect their host by lysing cells bearing on their surface &apos;nonself&apos; antigens, usually peptides or proteins resulting from infection by intracellular pathogens. The protein described here is a T cell- and natural killer cell-specific serine protease that may function as a common component necessary for lysis of target



cells by cytotoxic T lymphocytes and natural killer cells. [provided by RefSeq, Jul 2008],

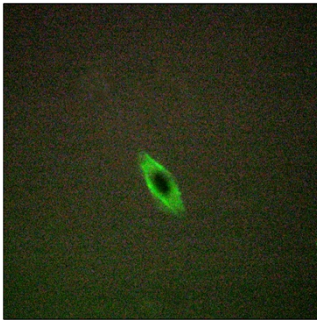
#### matters needing attention

Avoid repeated freezing and thawing!

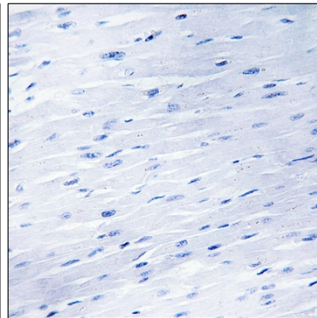
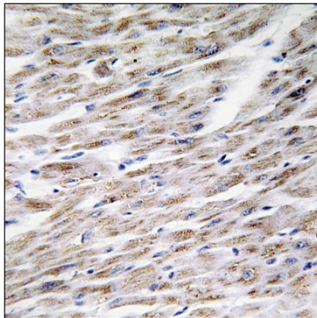
#### Usage suggestions

This product can be used in immunological reaction related experiments. For more information, please consult technical personnel.

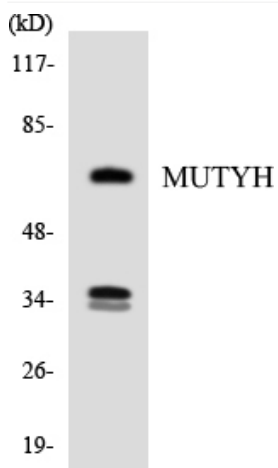
### Products Images



Immunofluorescence analysis of HepG2 cells, using GRAA Antibody. The picture on the right is blocked with the synthesized peptide.



Immunohistochemistry analysis of paraffin-embedded human heart tissue, using GRAA Antibody. The picture on the right is blocked with the synthesized peptide.



Western blot analysis of the lysates from HUVEC cells using MUTYH antibody.