

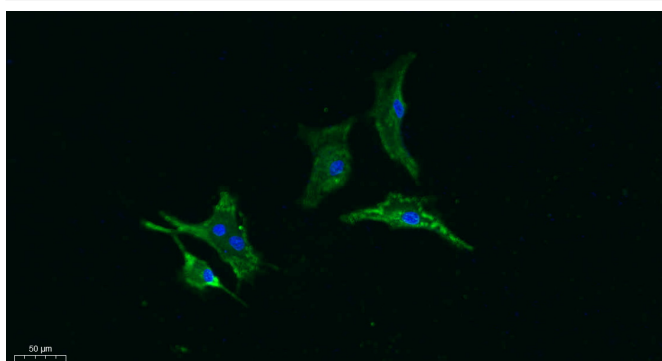


Gasdermin C Polyclonal Antibody

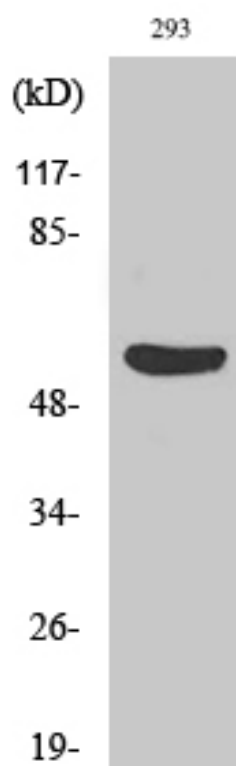
Catalog No	YP-Ab-00412
Isotype	IgG
Reactivity	Human;Rat;Mouse;
Applications	WB IF;ELISA
Gene Name	GSDMC
Protein Name	Gasdermin-C
Immunogen	The antiserum was produced against synthesized peptide derived from human GSDMC. AA range:109-158
Specificity	Gasdermin C Polyclonal Antibody detects endogenous levels of Gasdermin C protein.
Formulation	Liquid in PBS containing 50% glycerol, 0.5% BSA and 0.02% sodium azide.
Source	Polyclonal, Rabbit,IgG
Purification	The antibody was affinity-purified from rabbit antiserum by affinity-chromatography using epitope-specific immunogen.
Dilution	WB 1:500-2000 IF 1:100-300 ELISA 1:5000-20000 Not yet tested in other applications.
Concentration	1 mg/ml
Purity	≥90%
Storage Stability	-20°C/1 year
Synonyms	GSDMC; MLZE; Gasdermin-C; Melanoma-derived leucine zipper-containing extranuclear factor
Observed Band	55kD
Cell Pathway	[Gasdermin-C]: Cytoplasm, cytosol .; [Gasdermin-C, N-terminal]: Cell membrane ; Multi-pass membrane protein .
Tissue Specificity	Expressed mainly in trachea and spleen (PubMed:11223543). In the esophagus, expressed in differentiating cells and probably in differentiated cells. Also detected in gastric epithelium (PubMed:19051310).
Function	caution:Despite its name, it is unclear if this protein contains a functional leucine zipper.,similarity:Belongs to the gasdermin family.,tissue specificity:Expressed primarily in trachea and spleen.,
Background	caution:Despite its name, it is unclear if this protein contains a functional leucine zipper.,similarity:Belongs to the gasdermin family.,tissue specificity:Expressed primarily in trachea and spleen.,
matters needing attention	Avoid repeated freezing and thawing!

**Usage suggestions**

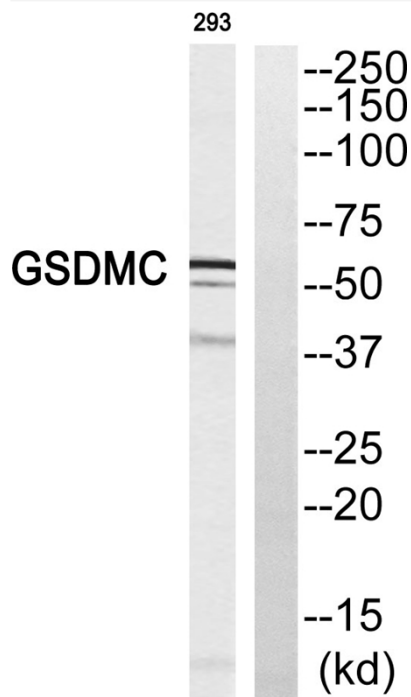
This product can be used in immunological reaction related experiments. For more information, please consult technical personnel.

Products Images

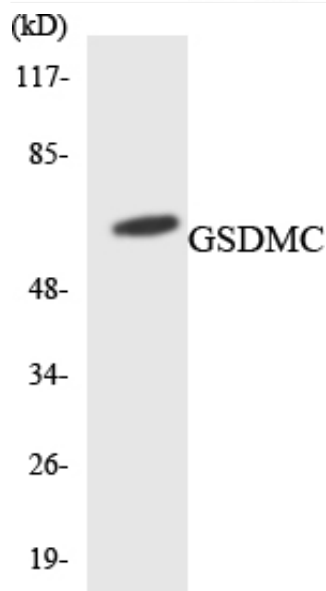
Immunofluorescence analysis of A549. 1, primary Antibody was diluted at 1:200 (4°C overnight). 2, Goat Anti Rabbit IgG (H&L) - Alexa Fluor 488 Secondary antibody was diluted at 1:1000 (room temperature, 50 min). 3, Picture B: DAPI (blue) 10 min.



Western Blot analysis of various cells using Gasdermin C Polyclonal Antibody diluted at 1:500



Western blot analysis of GSDMC Antibody. The lane on the right is blocked with the GSDMC peptide.



Western blot analysis of the lysates from HepG2 cells using GSDMC antibody.