



# Galectin-7 Polyclonal Antibody

<b>Catalog No</b>	YP-Ab-00406
<b>Isotype</b>	IgG
<b>Reactivity</b>	Human;Mouse;Rat
<b>Applications</b>	IHC;IF;WB;ELISA
<b>Gene Name</b>	LGALS7
<b>Protein Name</b>	Galectin-7
<b>Immunogen</b>	The antiserum was produced against synthesized peptide derived from human LEG7. AA range:41-90
<b>Specificity</b>	Galectin-7 Polyclonal Antibody detects endogenous levels of Galectin-7 protein.
<b>Formulation</b>	Liquid in PBS containing 50% glycerol, 0.5% BSA and 0.02% sodium azide.
<b>Source</b>	Polyclonal, Rabbit,IgG
<b>Purification</b>	The antibody was affinity-purified from rabbit antiserum by affinity-chromatography using epitope-specific immunogen.
<b>Dilution</b>	WB 1:500-2000 IHC: 1/100 - 1/300. ELISA: 1/5000.. IF 1:50-200
<b>Concentration</b>	1 mg/ml
<b>Purity</b>	≥90%
<b>Storage Stability</b>	-20°C/1 year
<b>Synonyms</b>	LGALS7; PIG1; LGALS7B; Galectin-7; Gal-7; HKL-14; PI7; p53-induced gene 1 protein
<b>Observed Band</b>	160kD
<b>Cell Pathway</b>	Cytoplasm . Nucleus . Secreted . May be secreted by a non-classical secretory pathway.
<b>Tissue Specificity</b>	Mainly expressed in stratified squamous epithelium.
<b>Function</b>	function:Could be involved in cell-cell and/or cell-matrix interactions necessary for normal growth control. Pro-apoptotic protein that functions intracellularly upstream of JNK activation and cytochrome c release.,induction:By p53.,online information:Galectin-7,similarity:Contains 1 galectin domain.,subcellular location:May be secreted by a non-classical secretory pathway.,subunit:Monomer.,tissue specificity:Mainly in stratified squamous epithelium.,
<b>Background</b>	The galectins are a family of beta-galactoside-binding proteins implicated in modulating cell-cell and cell-matrix interactions. Differential and in situ hybridization studies indicate that this lectin is specifically expressed in keratinocytes and found mainly in stratified squamous epithelium. A duplicate copy of this gene (GeneID:653499) is found adjacent to, but on the opposite strand on chromosome 19. [provided by RefSeq, Jul 2008],



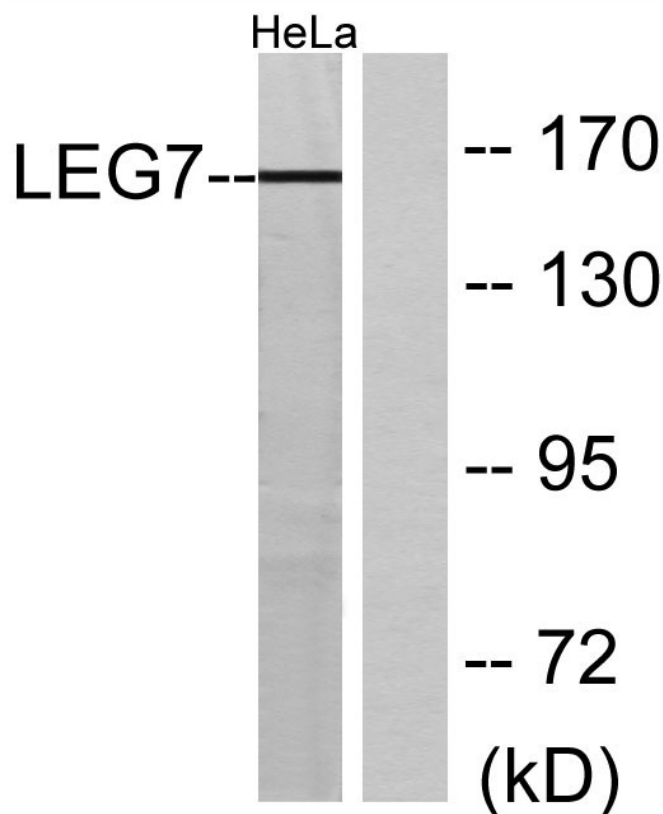
**matters needing attention**

Avoid repeated freezing and thawing!

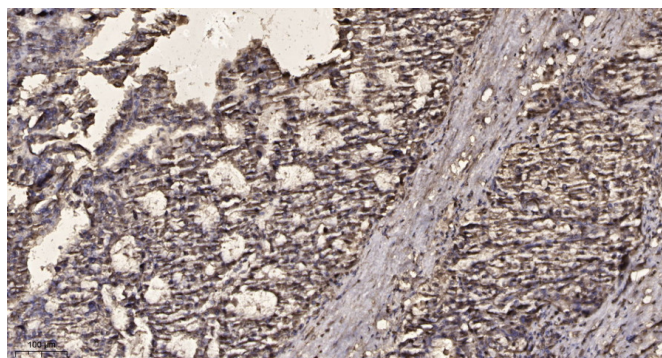
**Usage suggestions**

This product can be used in immunological reaction related experiments. For more information, please consult technical personnel.

**Products Images**



Western blot analysis of lysates from HeLa cells, using LEG7 Antibody. The lane on the right is blocked with the synthesized peptide.



Immunohistochemical analysis of paraffin-embedded human liver cancer. 1, Antibody was diluted at 1:200(4° overnight). 2, Tris-EDTA,pH9.0 was used for antigen retrieval. 3,Secondary antibody was diluted at 1:200(room temperature, 45min).