

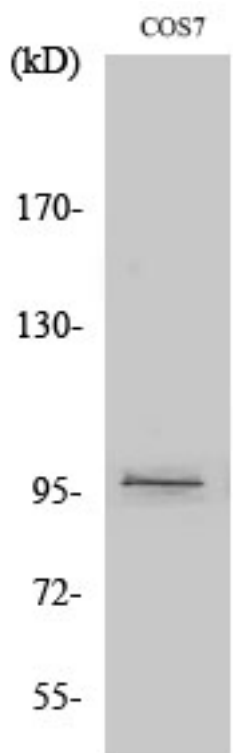


FASTKD1 Polyclonal Antibody

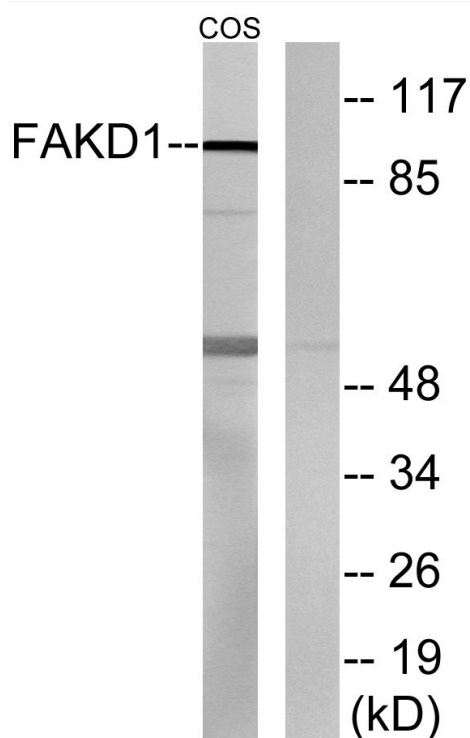
Catalog No	YP-Ab-00396
Isotype	IgG
Reactivity	Human;Mouse;Monkey
Applications	WB;ELISA
Gene Name	FASTKD1
Protein Name	FAST kinase domain-containing protein 1
Immunogen	The antiserum was produced against synthesized peptide derived from human FASTKD1. AA range:561-610
Specificity	FASTKD1 Polyclonal Antibody detects endogenous levels of FASTKD1 protein.
Formulation	Liquid in PBS containing 50% glycerol, 0.5% BSA and 0.02% sodium azide.
Source	Polyclonal, Rabbit,IgG
Purification	The antibody was affinity-purified from rabbit antiserum by affinity-chromatography using epitope-specific immunogen.
Dilution	Western Blot: 1/500 - 1/2000. ELISA: 1/10000. Not yet tested in other applications.
Concentration	1 mg/ml
Purity	≥90%
Storage Stability	-20°C/1 year
Synonyms	FASTKD1; KIAA1800; FAST kinase domain-containing protein 1
Observed Band	97kD
Cell Pathway	Mitochondrion . Preferentially localizes to mitochondrial RNA granules, platforms for post-transcriptional RNA modification and ribosome assembly (PubMed:28335001). .
Tissue Specificity	Expression detected in spleen, thymus, testis, ovary, colon, heart, smooth muscle, kidney, brain, lung, liver and white adipose tissue with highest expression in heart.
Function	caution:It is uncertain whether Met-1 or Met-15 is the initiator.,similarity:Belongs to the FAST kinase family.,similarity:Contains 1 RAP domain.,
Background	caution:It is uncertain whether Met-1 or Met-15 is the initiator.,similarity:Belongs to the FAST kinase family.,similarity:Contains 1 RAP domain.,
matters needing attention	Avoid repeated freezing and thawing!
Usage suggestions	This product can be used in immunological reaction related experiments. For more information, please consult technical personnel.



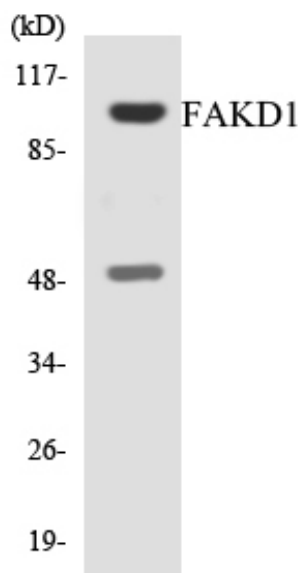
Products Images



Western Blot analysis of various cells using FASTKD1 Polyclonal Antibody



Western blot analysis of lysates from COS7 cells, using FAKD1 Antibody. The lane on the right is blocked with the synthesized peptide.



Western blot analysis of the lysates from HT-29 cells using FAKD1 antibody.
