



DOC-1 Polyclonal Antibody

Catalog No	YP-Ab-00383
Isotype	IgG
Reactivity	Human;Mouse
Applications	WB;ELISA
Gene Name	CDK2AP1
Protein Name	Cyclin-dependent kinase 2-associated protein 1
Immunogen	The antiserum was produced against synthesized peptide derived from human CDKAP1. AA range:51-100
Specificity	DOC-1 Polyclonal Antibody detects endogenous levels of DOC-1 protein.
Formulation	Liquid in PBS containing 50% glycerol, 0.5% BSA and 0.02% sodium azide.
Source	Polyclonal, Rabbit,IgG
Purification	The antibody was affinity-purified from rabbit antiserum by affinity-chromatography using epitope-specific immunogen.
Dilution	Western Blot: 1/500 - 1/2000. ELISA: 1/5000. Not yet tested in other applications.
Concentration	1 mg/ml
Purity	≥90%
Storage Stability	-20°C/1 year
Synonyms	CDK2AP1; CDKAP1; DOC1; Cyclin-dependent kinase 2-associated protein 1; CDK2-associated protein 1; Deleted in oral cancer 1; DOC-1; Putative oral cancer suppressor
Observed Band	20kD
Cell Pathway	nucleus,perinuclear region of cytoplasm,
Tissue Specificity	Skin,Testis,
Function	similarity:Belongs to the CDK2AP family.,
Background	cyclin dependent kinase 2 associated protein 1(CDK2AP1) Homo sapiens The protein encoded by this gene is a cyclin-dependent kinase 2 (CDK2)-associated protein which is thought to negatively regulate CDK2 activity by sequestering monomeric CDK2, and targeting CDK2 for proteolysis. This protein was found to also interact with DNA polymerase alpha/primase and mediate the phosphorylation of the large p180 subunit, which suggests a regulatory role in DNA replication during the S-phase of the cell cycle. This protein also forms a core subunit of the nucleosome remodeling and histone deacetylation (NURD) complex that epigenetically regulates embryonic stem cell differentiation. This gene thus plays a role in both cell-cycle and epigenetic regulation. Alternative



splicing results in multiple transcript variants encoding distinct isoforms. [provided by RefSeq, Jul 2012],

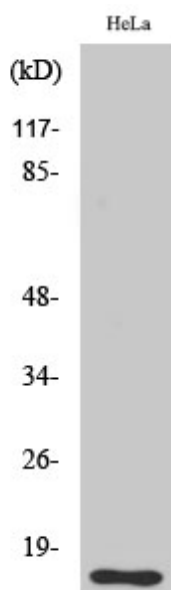
matters needing attention

Avoid repeated freezing and thawing!

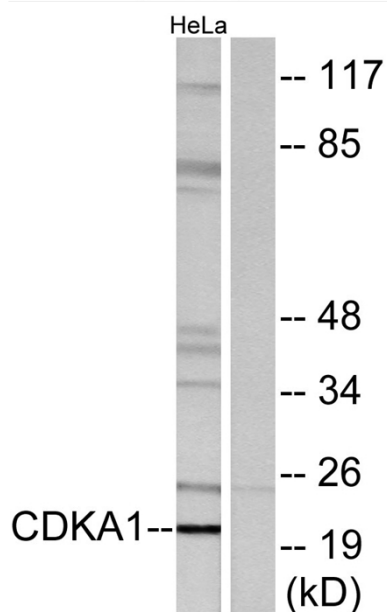
Usage suggestions

This product can be used in immunological reaction related experiments. For more information, please consult technical personnel.

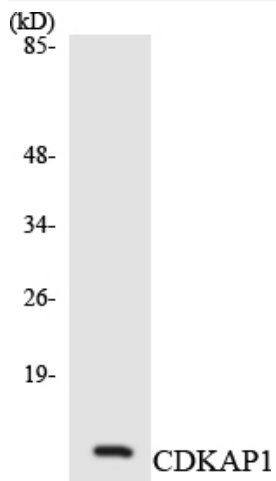
Products Images



Western Blot analysis of various cells using DOC-1 Polyclonal Antibody diluted at 1:500



Western blot analysis of lysates from HeLa cells, using CDKPA1 Antibody. The lane on the right is blocked with the synthesized peptide.



Western blot analysis of the lysates from HeLa cells using CDKAP1 antibody.