



CAD Polyclonal Antibody

Catalog No	YP-Ab-00339
Isotype	IgG
Reactivity	Human;Mouse
Applications	IHC;IF;ELISA
Gene Name	CAD
Protein Name	CAD protein
Immunogen	The antiserum was produced against synthesized peptide derived from human CAD. AA range:422-471
Specificity	CAD Polyclonal Antibody detects endogenous levels of CAD protein.
Formulation	Liquid in PBS containing 50% glycerol, 0.5% BSA and 0.02% sodium azide.
Source	Polyclonal, Rabbit,IgG
Purification	The antibody was affinity-purified from rabbit antiserum by affinity-chromatography using epitope-specific immunogen.
Dilution	IHC: 1/100 - 1/300. ELISA: 1/20000.. IF 1:50-200
Concentration	1 mg/ml
Purity	≥90%
Storage Stability	-20°C/1 year
Synonyms	CAD; CAD protein
Observed Band	250kD
Cell Pathway	Cytoplasm . Nucleus . Cytosolic and unphosphorylated in resting cells, translocates to the nucleus in response to EGF stimulation, nuclear import promotes optimal cell growth.
Tissue Specificity	Colon adenocarcinoma,Epi
Function	catalytic activity:(S)-dihydroorotate + H(2)O = N-carbamoyl-L-aspartate.,catalytic activity:2 ATP + L-glutamine + HCO(3)(-) + H(2)O = 2 ADP + phosphate + L-glutamate + carbamoyl phosphate.,catalytic activity:Carbamoyl phosphate + L-aspartate = phosphate + N-carbamoyl-L-aspartate.,cofactor:Binds 1 zinc ion per subunit (for dihydroorotase activity) .,enzyme regulation:Allosterically regulated and controlled by phosphorylation. 5-phosphoribose 1-diphosphate is an activator while UMP is an inhibitor of the CPSase reaction.,function:This protein is a "fusion" protein encoding four enzymatic activities of the pyrimidine pathway (GATase, CPSase, ATCase and DHOase).,miscellaneous:GATase (glutamine amidotransferase) and CPSase (carbamoyl phosphate synthase) form together the glutamine-dependent CPSase (GD-CPSase) (EC 6.3.5.5).,online information:Aspartate carbamoyltransferase entry,pathway:Pyrimi



Background

The de novo synthesis of pyrimidine nucleotides is required for mammalian cells to proliferate. This gene encodes a trifunctional protein which is associated with the enzymatic activities of the first 3 enzymes in the 6-step pathway of pyrimidine biosynthesis: carbamoylphosphate synthetase (CPS II), aspartate transcarbamoylase, and dihydroorotase. This protein is regulated by the mitogen-activated protein kinase (MAPK) cascade, which indicates a direct link between activation of the MAPK cascade and de novo biosynthesis of pyrimidine nucleotides. Alternative splicing results in multiple transcript variants encoding different isoforms. [provided by RefSeq, Apr 2015],

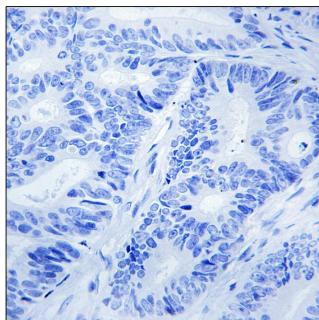
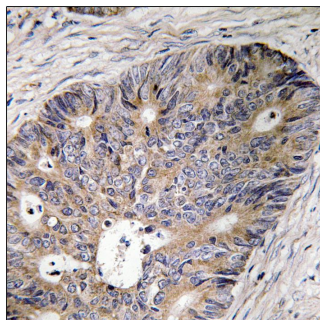
matters needing attention

Avoid repeated freezing and thawing!

Usage suggestions

This product can be used in immunological reaction related experiments. For more information, please consult technical personnel.

Products Images



Immunohistochemistry analysis of paraffin-embedded human colon carcinoma tissue, using CAD Antibody. The picture on the right is blocked with the synthesized peptide.