



# BTF Polyclonal Antibody

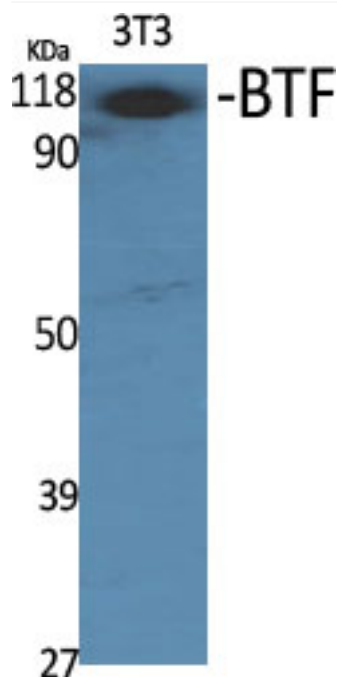
<b>Catalog No</b>	YP-Ab-00338
<b>Isotype</b>	IgG
<b>Reactivity</b>	Human;Mouse;Rat
<b>Applications</b>	WB;ELISA
<b>Gene Name</b>	BCLAF1
<b>Protein Name</b>	Bcl-2-associated transcription factor 1
<b>Immunogen</b>	The antiserum was produced against synthesized peptide derived from human BCLAF1. AA range:281-330
<b>Specificity</b>	BTF Polyclonal Antibody detects endogenous levels of BTF protein.
<b>Formulation</b>	Liquid in PBS containing 50% glycerol, 0.5% BSA and 0.02% sodium azide.
<b>Source</b>	Polyclonal, Rabbit,IgG
<b>Purification</b>	The antibody was affinity-purified from rabbit antiserum by affinity-chromatography using epitope-specific immunogen.
<b>Dilution</b>	Western Blot: 1/500 - 1/2000. ELISA: 1/10000. Not yet tested in other applications.
<b>Concentration</b>	1 mg/ml
<b>Purity</b>	≥90%
<b>Storage Stability</b>	-20°C/1 year
<b>Synonyms</b>	BCLAF1; BTF; KIAA0164; Bcl-2-associated transcription factor 1; Btf
<b>Observed Band</b>	106kD
<b>Cell Pathway</b>	Cytoplasm. Nucleus. Nucleus speckle . Nucleus, nucleoplasm .
<b>Tissue Specificity</b>	Ubiquitous.
<b>Function</b>	function:Death-promoting transcriptional repressor.,sequence caution:Contaminating sequence. Potential poly-A sequence.,subunit:Interacts with Bcl-2 related proteins, EMD, with the adenovirus E1B 19 kDa protein and with DNA.,tissue specificity:Ubiquitous.,
<b>Background</b>	This gene encodes a transcriptional repressor that interacts with several members of the BCL2 family of proteins. Overexpression of this protein induces apoptosis, which can be suppressed by co-expression of BCL2 proteins. The protein localizes to dot-like structures throughout the nucleus, and redistributes to a zone near the nuclear envelope in cells undergoing apoptosis. Multiple transcript variants encoding different isoforms have been found for this gene. [provided by RefSeq, Jul 2008],
<b>matters needing attention</b>	Avoid repeated freezing and thawing!



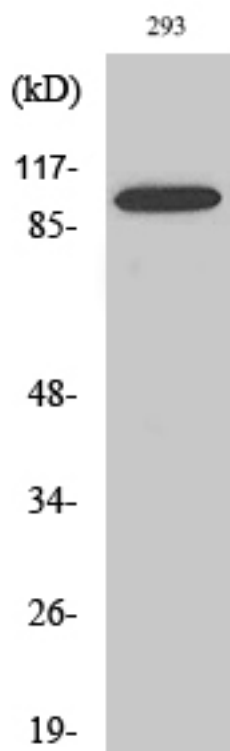
### Usage suggestions

This product can be used in immunological reaction related experiments. For more information, please consult technical personnel.

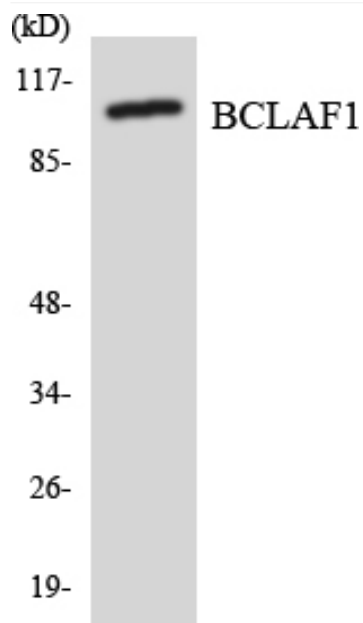
## Products Images



Western Blot analysis of various cells using BTF Polyclonal Antibody



Western Blot analysis of A549 cells using BTF Polyclonal Antibody



Western blot analysis of the lysates from HeLa cells using BCLAF1 antibody.